

POLYMER

INDUSTRIAL PRODUCTS Co., LLC

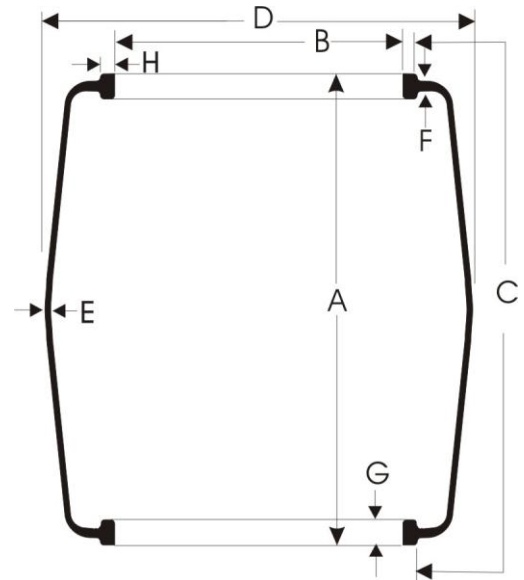
P.O. Box 310
688 Industrial Park Road
Piney Flats, TN 37686
USA

TEL: 423-538-5105
FAX: 423-538-3262
Email: sales@pipcousa.com

TABLE OF CONTENTS

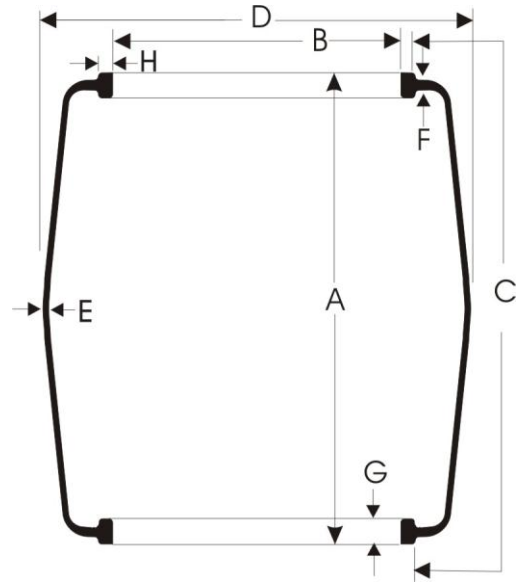
	Page#
McNEIL BOM Bladder	3-10
McNEIL BOM/Open-End Type Toroidal Thin Wall.....	11
McNEIL BOM/Open-End Type Toroidal Bladder	12
Autoform Bladder Bagwell Size 12"/13" Radial Design.....	13
NRM Autoform Bladder Bagwell Size 12"/13" Radial Design.....	14
NRM Autoform Bladder Bagwell Size 12"/13" Bias Design	15
NRM Autolock Bladder Bagwell Size 20"	16
NRM Autoform Bladder Bagwell Size 17"	17
NRM Autoform Bladder Bagwell Size 20"	18
Autoform Standing Post Bladders.....	19
Kobe Bladders.....	20
Krupp Bladders	21
Packaging Specifications	22-26

McNeil BOM Bladder



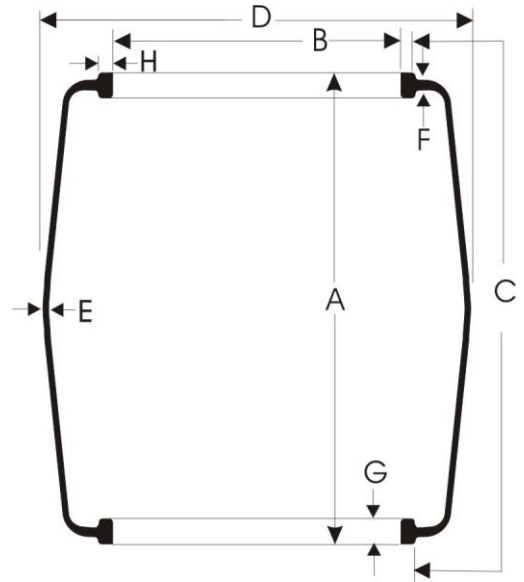
BLADDER CODE		SPECIFICATIONS									
		Overall Height	Foot I.D.	Usable Periphery	Outside Diameter	Gauge		Bead		Weight lb. kilo.	Bladder Vents/ Etching
						A	B	C	D		
309	inch	8.75	2.69	9.00	4.78	0.25	0.25	0.62	0.35	1.38	Raised V
	mm	222.3	68.3	228.6	121.4	6.4	6.4	15.7	8.9	0.63	
465	inch	11.65	2.87	12.25	5.75	0.31	0.25	0.75	0.37	2.70	V/E
	mm	295.9	72.9	311.2	146.1	7.9	6.4	19.1	9.4	1.22	
315	inch	8.50	3.38	8.75	5.50	0.25	0.25	0.62	0.35	1.54	Raised V
	mm	215.9	85.9	222.3	139.7	6.4	6.4	15.7	8.9	0.70	
311	inch	12.25	3.38	13.40	5.75	0.38	0.38	0.75	0.37	3.32	Raised V
	mm	311.2	85.9	340.4	146.1	9.7	9.7	19.1	9.4	1.51	
340	inch	12.50	3.75	12.75	6.50	0.30	0.30	0.60	0.30	2.95	V/E
	mm	317.5	95.3	323.9	165.1	7.6	7.6	15.2	7.6	1.34	
306	inch	14.75	3.05	15.00	5.70	0.25	0.25	0.73	0.40	2.90	Raised V
	mm	374.7	77.5	381.0	144.8	6.4	6.4	18.5	10.2	1.32	
310	inch	17.75	3.38	18.00	7.00	0.31	0.31	0.73	0.40	4.66	V
	mm	450.9	85.9	457.2	177.8	7.9	7.9	18.5	10.2	2.11	
338	inch	10.00	4.50	10.75	8.00	0.31	0.38	0.88	0.50	3.46	Raised V
	mm	254.0	114.3	273.1	203.2	7.9	9.7	22.4	12.7	1.57	
350	inch	10.25	4.63	12.04	8.50	0.30	0.31	0.66	0.44	3.55	V/E
	mm	260.4	117.6	305.8	215.9	7.6	7.9	16.8	11.2	1.61	
304	inch	11.00	4.50	11.50	8.25	0.38	0.38	0.93	0.52	4.31	Raised V
	mm	279.4	114.3	292.1	209.6	9.7	9.7	23.6	13.2	1.95	
313	inch	12.93	4.50	13.75	8.25	0.25	0.38	0.93	0.52	4.41	Raised V
	mm	328.4	114.3	349.3	209.6	6.4	9.7	23.6	13.2	2.00	
351	inch	13.25	4.63	15.04	8.50	0.30	0.31	0.66	0.44	4.51	V/E
	mm	336.6	117.6	382.0	215.9	7.6	7.9	16.8	11.2	2.05	
305	inch	14.00	4.50	14.50	8.25	0.25	0.38	0.93	0.52	4.26	Raised V
	mm	355.6	114.3	368.3	209.6	6.4	9.7	23.6	13.2	1.93	
300	inch	17.50	4.50	18.00	8.15	0.30	0.30	0.93	0.52	5.83	V/E
	mm	444.5	114.3	457.2	207.0	7.6	7.6	23.6	13.2	2.64	

McNeil BOM Bladder



SPECIFICATIONS											
BLADDER CODE		Overall Height	Foot I.D.	Usable Periphery	Outside Diameter	Gauge		Bead		Weight lb. kilo.	Bladder Vents/ Etching
		A	B	C	D	Center E	Neck F	Width G	Height H		
301	inch	19.50	4.50	20.00	8.15	0.44	0.38	0.93	0.52	8.07	V/E
	mm	495.3	114.3	508.0	207.0	11.2	9.7	23.6	13.2	3.66	
325	inch	19.48	6.00	20.13	11.38	0.44	0.34	0.93	0.50	10.62	V/E
	mm	494.8	152.4	511.3	289.1	11.2	8.6	23.6	12.7	4.82	
326	inch	15.36	6.00	15.75	11.38	0.44	0.38	0.87	0.50	8.44	V/E
	mm	390.1	152.4	400.1	289.1	11.2	9.7	22.1	12.7	3.83	
344	inch	10.25	6.63	10.50	9.75	0.35	0.35	0.80	0.38	4.70	V/E
	mm	260.4	168.4	266.7	247.7	8.9	8.9	20.3	9.5	2.13	
352	inch	18.00	4.63	19.79	8.50	0.30	0.31	0.66	0.44	5.85	V/E
	mm	457.2	117.6	502.7	215.9	7.6	7.9	16.76	11.2	2.65	
353	inch	21.00	4.63	22.79	8.50	0.30	0.31	0.66	0.44	6.67	V/E
	mm	533.4	117.6	578.9	215.9	7.6	7.9	16.8	11.2	3.03	
308	inch	14.00	6.63	14.75	10.75	0.38	0.38	0.93	0.52	7.25	V/E
	mm	355.6	168.4	374.7	273.1	9.7	9.7	23.6	13.2	3.29	
312	inch	14.00	6.63	14.75	10.75	0.25	0.38	0.93	0.52	5.29	V/E
	mm	355.6	168.4	374.7	273.1	6.4	9.7	23.6	13.2	2.40	
339	inch	21.50	6.50	21.75	12.50	0.38	0.38	0.88	0.50	10.73	Raised V
	mm	546.1	165.1	552.5	317.5	9.7	9.7	22.4	12.7	4.87	
307	inch	11.00	8.63	11.75	12.88	0.43	0.40	0.93	0.52	7.92	Raised V
	mm	279.4	219.2	298.5	327.2	10.9	10.2	23.6	13.2	3.59	
316	inch	13.38	8.63	14.25	12.88	0.43	0.36	0.85	0.52	9.52	Raised V
	mm	339.9	219.2	362.0	327.2	10.9	9.1	21.6	13.2	4.32	
327	inch	16.16	8.62	16.25	13.88	0.44	0.38	0.87	0.50	10.86	V/E
	mm	410.5	218.9	412.8	352.6	11.2	9.7	22.1	12.7	4.93	
336	inch	17.50	8.63	18.00	12.75	0.25	0.35	0.85	0.52	9.33	Raised V
	mm	444.5	219.2	457.2	323.9	6.4	8.9	21.6	13.2	4.23	

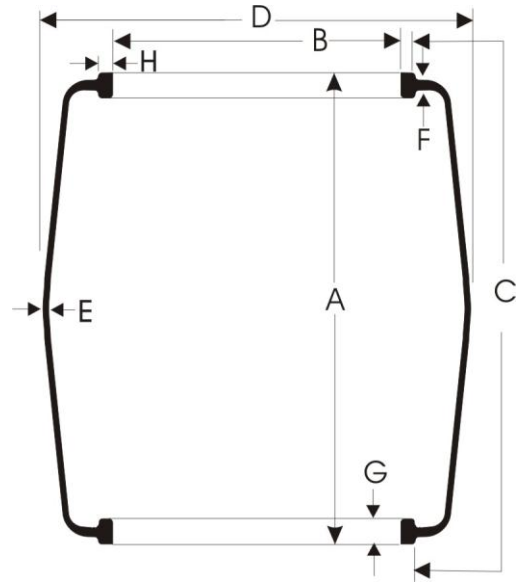
McNeil BOM Bladder



SPECIFICATIONS											
BLADDER CODE		Overall	Foot	Usable	Outside	Gauge		Bead		Weight	Bladder
		Height	I.D.	Periphery	Diameter	Center	Neck	Width	Height		
		A	B	C	D	E	F	G	H	kilo.	
324	inch	19.00	8.88	20.25	16.00	0.35	0.38	0.85	0.50	12.64	E
	mm	482.6	225.6	514.4	406.4	8.9	9.7	21.6	12.7	5.73	
329	inch	13.25	9.00	13.65	14.75	0.35	0.35	0.80	0.50	9.10	V/E
	mm	336.6	228.6	346.7	374.7	8.9	8.9	20.3	12.7	4.13	
320	inch	15.59	9.00	15.75	13.63	0.44	0.34	0.93	0.50	10.25	V/E
	mm	396.0	228.6	400.1	346.2	11.2	8.6	23.6	12.7	4.65	
480	inch	16.25	9.88	17.00	14.69	0.20	0.38	0.88	0.50	7.83	V/E
	mm	412.8	251.0	431.8	373.1	5.1	9.7	22.4	12.7	3.55	
317	inch	17.51	9.88	18.50	14.73	0.25	0.38	0.88	0.50	10.79	V/E
	mm	444.8	251.0	469.9	374.1	6.4	9.7	22.4	12.7	4.89	
481	inch	19.01	9.88	19.75	14.88	0.25	0.35	0.88	0.50	12.14	V/E
	mm	482.9	251.0	501.7	378.0	6.4	8.9	22.4	12.7	5.51	
333	inch	13.25	10.88	14.50	16.75	0.35	0.38	0.80	0.50	11.44	E
	mm	336.6	276.4	368.3	425.5	8.9	9.7	20.3	12.7	5.19	
330	inch	15.85	10.88	17.00	15.84	0.25	0.38	0.88	0.50	10.51	V/E
	mm	402.6	276.4	431.8	402.3	6.4	9.7	22.4	12.7	4.77	
483	inch	16.88	10.88	17.75	15.84	0.25	0.38	0.88	0.50	11.20	V/E
	mm	428.8	276.4	450.9	402.3	6.4	9.7	22.4	12.7	5.08	
479	inch	17.85	10.88	19.00	15.84	0.25	0.38	0.90	0.50	11.42	V/E
	mm	453.4	276.4	482.6	402.3	6.4	9.7	22.9	12.7	5.18	
482	inch	17.75	10.25	18.50	15.20	0.25	0.38	0.80	0.46	11.14	E
	mm	450.9	260.4	469.9	386.1	6.4	9.7	20.3	11.7	5.05	
331	inch	19.13	10.88	20.20	15.84	0.25	0.35	0.88	0.50	11.51	V/E
	mm	485.9	276.4	513.1	402.3	6.4	8.9	22.4	12.0	5.22	
322	inch	22.00	10.88	22.20	15.84	0.25	0.35	0.88	0.50	14.54	V/E
	mm	558.8	276.4	563.9	402.3	6.4	8.9	22.4	15.3	6.60	
328	inch	26.50	10.88	26.50	16.75	0.31	0.38	0.88	0.50	18.16	V/E
	mm	673.1	276.4	673.1	425.5	7.9	9.7	22.4	12.7	8.24	
332	inch	29.50	10.88	29.50	16.75	0.31	0.38	0.88	0.50	20.24	V/E
	mm	749.3	276.4	749.3	425.5	7.9	9.7	22.4	12.7	9.18	

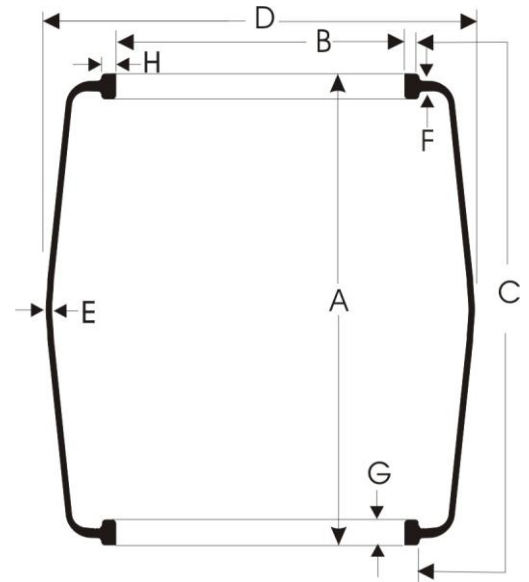
McNeil

BOM Bladder



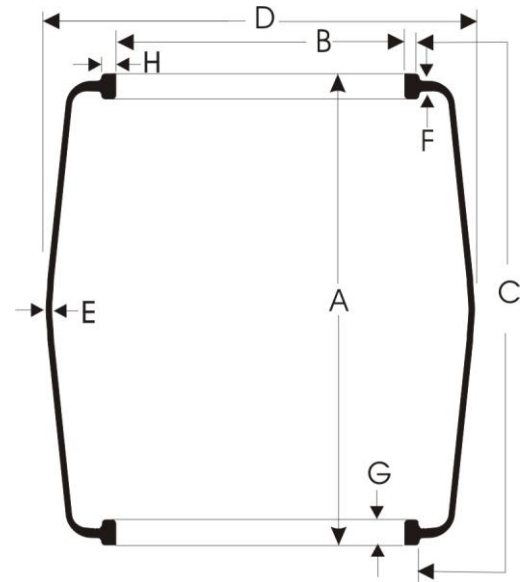
SPECIFICATIONS											
BLADDER CODE		Overall	Foot	Usable	Outside	Gauge		Bead		Weight	Bladder
		Height	I.D.	Periphery	Diameter	Center	Neck	Width	Height		
		A	B	C	D	E	F	G	H	kilo.	
354	inch	19.50	12.75	20.02	19.00	0.25	0.35	0.90	0.50	13.55	V/E
	mm	495.3	323.9	508.5	482.6	6.4	8.9	22.9	12.7	6.15	
319	inch	19.75	15.13	21.25	22.50	0.30	0.48	1.07	0.50	20.23	V/E
	mm	501.7	384.3	539.8	571.5	7.6	12.2	27.2	12.7	9.18	
323	inch	24.50	15.13	25.50	22.50	0.35	0.50	1.10	0.50	25.66	V/E
	mm	622.3	384.3	647.7	571.5	8.9	12.7	27.9	12.7	11.64	
355	inch	19.75	14.00	22.38	22.50	0.35	0.50	1.10	0.50	18.62	V/E
	mm	501.7	355.6	568.5	571.5	8.9	12.7	27.9	12.7	8.45	
356	inch	24.50	14.00	26.63	22.50	0.35	0.50	1.10	0.50	22.85	V/E
	mm	622.3	355.6	676.4	571.5	8.9	12.7	27.9	12.7	10.36	

McNeil BOM Bladder



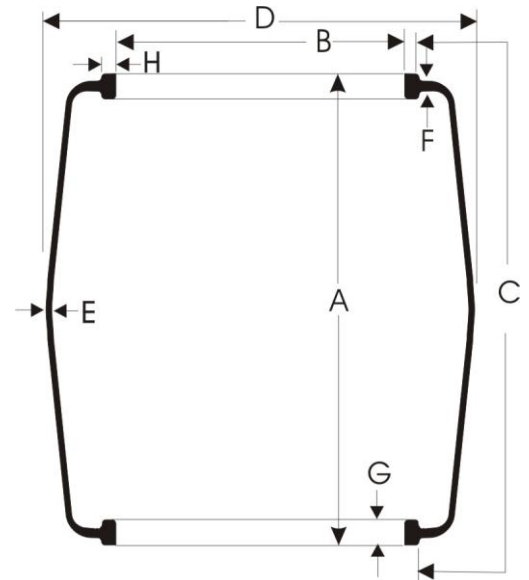
SPECIFICATIONS											
BLADDER CODE		Overall	Foot	Usable	Outside	Gauge		Bead		Weight lb. kilo.	Bladder Vents/ Etching
		Height A	I.D. B	Periphery C	Diameter D	Center E	Neck F	Width G	Height H		
600	inch	8.50	2.25	9.27	5.00	0.30	0.30	0.60	0.30	1.45	V
	mm	215.9	57.2	235.5	127.0	7.6	7.6	15.2	7.6	0.66	
601	inch	10.75	2.25	11.52	5.00	0.30	0.30	0.60	0.30	1.84	V
	mm	273.1	57.2	292.6	127.0	7.6	7.6	15.2	7.6	0.83	
602	inch	8.00	3.50	8.80	6.50	0.30	0.30	0.60	0.30	1.83	V
	mm	203.2	88.9	223.5	165.1	7.6	7.6	15.2	7.6	0.83	
603	inch	12.50	3.50	13.05	6.25	0.30	0.30	0.60	0.30	2.76	V
	mm	317.5	88.9	331.5	158.8	7.6	7.6	15.2	7.6	1.25	
604	inch	13.75	3.50	15.14	9.00	0.30	0.30	0.60	0.30	4.17	V
	mm	349.3	88.9	384.6	228.6	7.6	7.6	15.2	7.6	1.89	
605	inch	17.50	3.50	18.15	6.25	0.30	0.30	0.60	0.30	3.85	V
	mm	444.5	88.9	461.0	158.8	7.6	7.6	15.2	7.6	1.75	
606	inch	7.25	4.75	8.82	7.50	0.30	0.30	0.65	0.40	2.35	V
	mm	184.2	120.7	224.0	190.5	7.6	7.6	16.5	10.2	1.07	
607	inch	10.25	4.75	11.22	7.50	0.30	0.30	0.65	0.40	3.02	V
	mm	260.4	120.7	285.0	190.5	7.6	7.6	16.5	10.2	1.37	
608	inch	10.25	4.75	11.72	10.00	0.30	0.30	0.65	0.40	3.80	V
	mm	260.4	120.7	297.7	254.0	7.6	7.6	16.5	10.2	1.72	
609	inch	13.25	4.75	14.35	9.00	0.30	0.30	0.65	0.40	4.33	V
	mm	336.6	120.7	364.5	228.6	7.6	7.6	16.5	10.2	1.96	
610	inch	19.25	4.75	20.32	9.00	0.30	0.30	0.65	0.40	5.93	V
	mm	489.0	120.7	516.1	228.6	7.6	7.6	16.5	10.2	2.69	
611	inch	8.75	6.19	9.78	10.00	0.30	0.30	0.65	0.40	3.70	V
	mm	222.3	157.2	248.4	254.0	7.6	7.6	16.5	10.2	1.68	
612	inch	11.25	6.19	12.28	10.00	0.30	0.30	0.65	0.40	4.65	V
	mm	285.8	157.2	311.9	254.0	7.6	7.6	16.5	10.2	2.11	
613	inch	15.00	6.19	15.97	10.00	0.30	0.30	0.65	0.40	5.85	V
	mm	381.0	157.2	405.6	254.0	7.6	7.6	16.5	10.2	2.65	
614	inch	17.50	6.19	18.47	10.00	0.30	0.30	0.65	0.40	6.76	V
	mm	444.5	157.2	469.1	254.0	7.6	7.6	16.5	10.2	3.07	

McNeil BOM Bladder



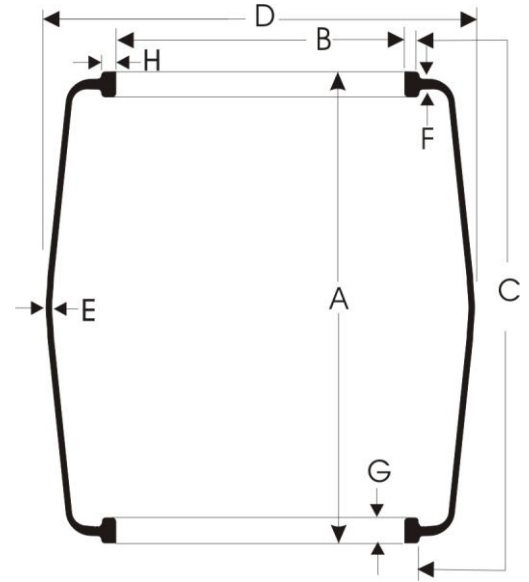
SPECIFICATIONS											
BLADDER CODE		Overall	Foot	Usable	Outside	Gauge		Bead		Weight	Bladder
		Height	I.D.	Periphery	Diameter	Center	Neck	Width	Height		
		A	B	C	D	E	F	G	H		
615	inch	19.00	6.19	20.32	11.40	0.30	0.30	0.65	0.40	7.94	V
	mm	482.6	157.2	516.1	289.6	7.6	7.6	16.5	10.2	3.60	
616	inch	21.50	6.19	22.82	11.40	0.30	0.30	0.65	0.40	8.90	V
	mm	546.1	157.2	579.6	289.6	7.6	7.6	16.5	10.2	4.04	
617	inch	12.60	6.25	14.20	12.25	0.25	0.30	0.65	0.40	4.55	V
	mm	320.0	158.8	360.7	311.2	6.4	7.6	16.5	10.2	2.06	
618	inch	29.25	7.00	29.95	12.00	0.45	0.38	0.90	0.45	18.00	V
	mm	743.0	177.8	760.7	304.8	11.4	9.7	22.9	11.4	8.16	
619	inch	9.00	7.44	10.36	12.00	0.35	0.38	0.75	0.50	5.35	V
	mm	228.6	189.0	263.1	304.8	8.9	9.7	19.1	12.7	2.43	
620	inch	11.50	7.44	12.86	12.00	0.35	0.38	0.75	0.50	6.57	V
	mm	292.1	189.0	326.6	304.8	8.9	9.7	19.1	12.7	2.98	
621	inch	14.00	7.44	15.77	14.00	0.35	0.38	0.75	0.50	8.28	V
	mm	355.6	189.0	400.6	355.6	8.9	9.7	19.1	12.7	3.76	
622	inch	16.50	7.44	18.27	14.00	0.35	0.38	0.75	0.50	9.88	V
	mm	419.1	189.0	464.1	355.6	8.9	9.7	19.1	12.7	4.48	
623	inch	19.00	7.44	21.18	15.00	0.35	0.38	0.75	0.50	12.17	V
	mm	482.6	189.0	538.0	381.0	8.9	9.7	19.1	12.7	5.52	
624	inch	22.00	7.44	24.18	15.00	0.35	0.38	0.75	0.50	13.92	V
	mm	558.8	189.0	614.2	381.0	8.9	9.7	19.1	12.7	6.31	
625	inch	11.50	8.88	12.93	14.00	0.30	0.38	0.80	0.50	7.34	V
	mm	292.1	225.6	328.4	355.6	7.6	9.7	20.3	12.7	3.33	
626	inch	13.75	8.88	15.18	14.00	0.35	0.38	0.75	0.50	8.54	V
	mm	349.3	225.6	385.6	355.6	8.9	9.7	19.1	12.7	3.87	
627	inch	15.00	8.88	16.94	16.00	0.30	0.38	0.75	0.50	10.43	E
	mm	381.0	225.6	430.3	406.4	7.6	9.7	19.1	12.7	4.73	
628	inch	17.00	8.88	18.94	16.00	0.30	0.38	0.75	0.50	11.60	E
	mm	431.8	225.6	481.1	406.4	7.6	9.7	19.1	12.7	5.26	

McNeil BOM Bladder

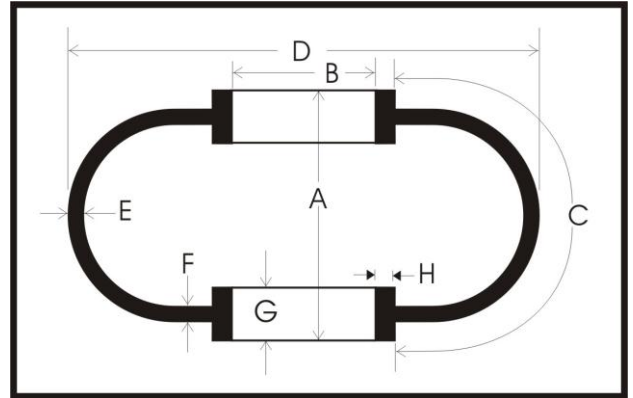


BLADDER CODE	SPECIFICATIONS										
	Overall Height	Foot I.D.	Usable Periphery	Outside Diameter	Gauge		Bead		Weight lb. kilo.	Bladder Vents/ Etching	
	A	B	C	D	Center E	Neck F	Width G	Height H			
629	inch	19.38	8.88	21.00	15.12	0.35	0.38	0.75	0.50	13.08	V
	mm	492.3	225.6	533.4	384.0	8.9	9.7	19.1	12.7	5.93	
630	inch	22.00	8.88	24.00	17.00	0.35	0.38	0.80	0.50	16.18	V
	mm	558.8	225.6	609.6	431.8	8.9	9.7	20.3	12.7	7.34	
631	inch	25.00	8.88	27.00	17.00	0.35	0.38	0.80	0.50	18.39	V
	mm	635.0	225.6	685.8	431.8	8.9	9.7	20.3	12.7	8.34	
632	inch	15.25	10.88	18.02	20.00	0.35	0.38	0.80	0.50	14.14	V
	mm	387.4	276.4	457.7	508.0	8.9	9.7	20.3	12.7	6.41	
633	inch	17.25	10.88	20.02	20.00	0.35	0.38	0.80	0.50	15.68	V
	mm	438.2	276.4	508.5	508.0	8.9	9.7	20.3	12.7	7.11	
634	inch	28.00	10.88	29.38	16.75	0.35	0.38	0.80	0.50	18.98	V
	mm	711.2	276.4	746.3	425.5	8.9	9.7	20.3	12.7	8.61	
635	inch	21.25	13.38	22.38	19.50	0.63	0.63	1.20	0.56	29.54	V
	mm	539.8	339.9	568.5	495.3	16.0	16.0	30.5	14.2	13.40	
636	inch	28.00	13.38	29.38	19.50	0.63	0.63	1.20	0.56	39.78	V
	mm	711.2	339.9	746.3	495.3	16.0	16.0	30.5	14.2	18.04	
637	inch	32.50	13.38	33.88	19.50	0.63	0.63	1.20	0.56	47.07	V
	mm	825.5	339.9	860.6	495.3	16.0	16.0	30.5	14.2	21.35	
638	inch	15.00	10.88	17.49	16.00	0.50	0.38	0.80	0.50	14.65	V
	mm	381.0	276.4	444.2	406.4	12.7	9.7	20.3	12.7	6.65	
639	inch	17.75	10.88	20.24	16.00	0.25	0.38	0.80	0.50	10.28	V
	mm	450.9	276.4	514.1	406.4	6.4	9.7	20.3	12.7	4.66	
640	inch	12.00	15.12	14.41	20.00	0.35	0.38	0.77	0.56	12.20	V
	mm	304.8	384.0	366.0	508.0	8.9	9.7	19.6	14.2	5.53	
641	inch	16.75	6.19	18.02	10.00	0.30	0.30	0.65	0.40	6.47	V
	mm	425.5	157.2	457.7	254.0	7.6	7.6	16.5	10.2	2.93	
642	inch	39.00	13.38	42.55	24.00	0.63	0.63	1.20	0.56	64.95	V
	mm	990.6	339.9	1080.8	609.6	16.0	16.0	30.5	14.2	29.46	

McNeil BOM Bladder



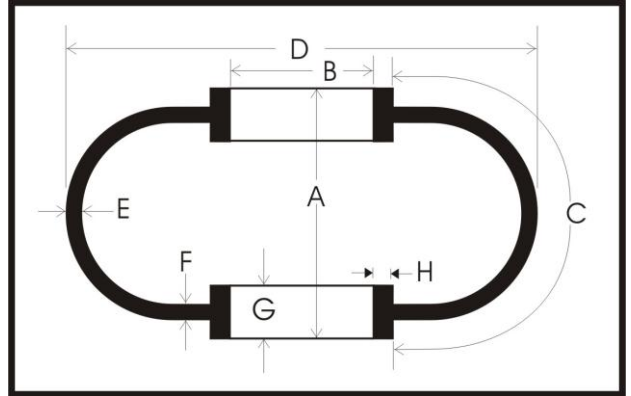
SPECIFICATIONS											
BLADDER CODE		Overall Height	Foot I.D.	Usable Periphery	Outside Diameter	Gauge		Bead		Weight lb. kilo.	Bladder Vents/ Etching
		A	B	C	D	Center E	Neck F	Width G	Height H		
643	inch	43.00	13.38	46.55	24.00	0.63	0.63	1.20	0.56	70.30	V
	mm	1092.2	339.9	1182.4	609.6	16.0	16.0	30.5	14.2	31.89	
644	inch	32.00	13.38	35.22	22.00	0.63	0.63	1.20	0.56	50.64	V
	mm	812.8	339.9	894.6	558.8	16.0	16.0	30.5	14.2	22.97	
645	inch	36.00	13.38	39.22	22.00	0.63	0.63	1.20	0.56	56.39	V
	mm	914.4	339.9	996.2	558.8	16.0	16.0	30.5	14.2	25.58	
646	inch	27.80	12.00	30.94	22.00	0.40	0.44	1.13	0.50	28.75	V/E
	mm	706.1	304.8	785.9	558.8	10.2	11.2	28.7	12.7	13.04	
647	inch	25.60	15.25	28.47	30.00	0.40	0.59	1.09	0.50	35.20	V
	mm	650.2	387.4	723.1	762.0	10.2	15.0	27.7	12.7	15.97	
648	inch	28.18	13.38	32.55	25.00	0.40	0.63	1.20	0.56	33.72	V
	mm	715.8	339.9	826.8	635.0	10.2	16.0	30.5	14.2	15.30	
649	inch	20.62	17.13	26.23	31.00	0.40	0.59	1.09	0.50	33.40	V
	mm	523.7	435.1	666.2	787.4	10.2	15.0	27.7	12.7	15.15	
650	inch	19.21	15.13	24.48	28.00	0.40	0.59	1.09	0.50	28.03	V
	mm	487.9	384.3	621.8	711.2	10.2	15.0	27.7	12.7	12.71	
651	inch	22.18	15.13	27.50	29.00	0.40	0.59	1.09	0.50	32.11	V
	mm	563.4	384.3	698.5	736.6	10.2	15.0	27.7	12.7	14.56	
652	inch	27.62	17.13	33.23	31.00	0.40	0.59	1.09	0.50	43.15	V
	mm	701.5	435.1	844.0	787.4	10.2	15.0	27.7	12.7	19.57	
652	inch	17.75	10.25	18.50	15.20	0.40	0.59	1.09	0.50	35.20	V
	mm	450.9	260.4	469.9	386.1	10.2	15.0	27.7	12.7	15.97	



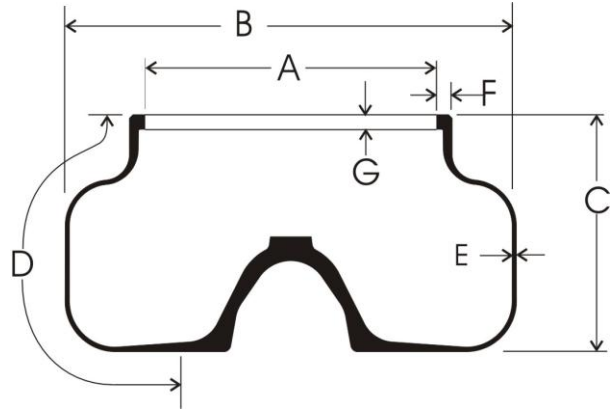
McNeil BOM/Open-End Type Toroidal Bladder

BLADDER CODE		SPECIFICATIONS									Bladder Vents/ Etching
		Overall Height A	Foot I.D. B	Usable Periphery C	Outside Diameter D	Gauge		Bead		Weight lb. kilo.	
						Center E	Neck F	Width G	Height H		
520	inch	9.20	8.80	13.30	18.00	0.17	0.32	0.89	0.50	5.33	V/E
	mm	233.7	223.5	337.8	457.2	4.2	8.1	22.6	12.7	2.42	
521	inch	10.45	8.80	14.13	18.00	0.17	0.32	0.89	0.50	5.78	V/E
	mm	265.4	223.5	358.9	457.2	4.2	8.1	22.6	12.7	2.62	
522	inch	11.75	8.80	15.43	18.00	0.17	0.32	0.89	0.50	6.12	V/E
	mm	298.5	223.5	391.9	457.2	4.2	8.1	22.6	12.7	2.78	
523	inch	10.35	9.80	14.50	19.00	0.17	0.32	0.89	0.50	6.14	V/E
	mm	262.9	248.9	368.3	482.6	4.2	8.1	22.6	12.7	2.79	
524	inch	11.85	9.80	16.00	19.00	0.17	0.32	0.89	0.50	6.80	V/E
	mm	301.0	248.9	406.4	482.6	4.2	8.1	22.6	12.7	3.08	
525	inch	12.00	10.92	16.93	22.00	0.17	0.32	0.89	0.50	8.38	V/E
	mm	304.8	277.4	430.0	558.8	4.2	8.1	22.6	12.7	3.80	
526	inch	15.00	10.92	19.93	22.00	0.17	0.32	0.89	0.50	9.50	V/E
	mm	381.0	277.4	506.2	558.8	4.2	8.1	22.6	12.7	4.31	
527	inch	11.63	11.92	14.50	19.00	0.17	0.32	0.89	0.50	7.02	V/E
	mm	295.4	302.8	368.3	482.6	4.2	8.1	22.6	12.7	3.18	
528	inch	12.00	9.80	16.93	20.50	0.17	0.32	0.89	0.50	7.80	V/E
	mm	304.8	248.9	430.0	520.7	4.3	8.1	22.6	12.7	3.54	
529	inch	14.00	11.92	19.61	24.00	0.17	0.32	0.87	0.50	9.96	V/E
	mm	355.6	302.8	498.1	609.6	4.2	8.1	22.1	12.7	4.52	
530	inch	14.75	11.92	17.47	20.50	0.17	0.32	0.89	0.50	8.32	V/E
	mm	374.7	302.8	443.7	520.7	4.3	8.1	22.6	12.7	3.77	

McNeil BOM/Open-End Type Toroidal Bladder



		SPECIFICATIONS									
BLADDER CODE		Overall	Foot	Usable	Outside	Gauge		Bead		Weight	Bladder
		Height	I.D.	Periphery	Diameter	Center	Neck	Width	Height	lb.	Vents/ Etching
		A	B	C	D	E	F	G	H	kilo.	
531	inch	15.75	15.13	20.20	25.00	0.30	0.38	1.00	0.50	19.40	V/E
	mm	400.1	384.3	513.1	635.0	7.6	9.7	25.4	12.7	8.80	
532	inch	18.75	15.13	22.70	25.00	0.30	0.38	1.00	0.50	21.80	V/E
	mm	476.3	384.3	576.6	635.0	7.6	9.7	25.4	12.7	9.89	



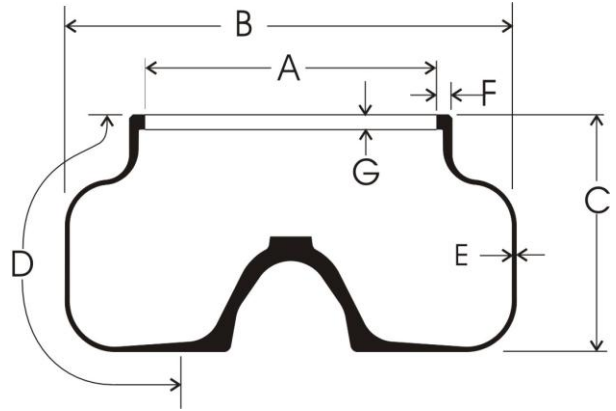
NRM

Autoform Bladder

Bagwell Size 12"/13"

Radial Design

BLADDER CODE		SPECIFICATIONS								Bladder Vents/ Etching
		Foot ID A	Outside Diameter B	Overall Height C	Usable Periphery D	Crown Gauge E	Foot		Weight lb. kilo.	
							Width F	Height G		
470	inch	10.66	16.50	8.50	12.37	0.16	0.57	0.54	6.45	V/E
	mm	270.8	419.1	215.9	314.2	4.1	14.5	13.7	2.93	
468	inch	10.66	16.50	10.50	14.39	0.16	0.57	0.54	7.20	V/E
	mm	270.8	419.1	266.7	365.5	4.1	14.5	13.7	3.32	
471	inch	10.66	16.50	12.00	15.87	0.16	0.57	0.54	8.30	V/E
	mm	270.8	419.1	304.8	403.1	4.1	14.5	13.7	3.76	
484	inch	10.66	22.00	13.10	19.25	0.20	0.57	0.54	11.11	V/E
	mm	270.8	558.8	332.7	489.0	5.1	14.5	13.7	5.04	
491	inch	10.66	22.00	13.10	19.25	0.16	0.57	0.54	9.80	V/E
	mm	270.8	558.8	332.7	489.0	4.1	14.5	13.7	4.45	
476	inch	10.66	22.00	14.10	20.25	0.17	0.57	0.54	10.10	V/E
	mm	270.8	558.8	358.1	514.4	4.2	14.5	13.7	4.58	
485	inch	10.66	22.00	15.10	21.25	0.20	0.57	0.54	12.05	V/E
	mm	270.8	558.8	383.5	539.8	5.1	14.5	13.7	5.47	
499	inch	10.66	22.00	15.10	21.25	0.16	0.57	0.54	10.75	V/E
	mm	270.8	558.8	383.5	539.8	4.1	14.5	13.7	4.88	
486	inch	10.66	18.80	10.00	14.50	0.20	0.57	0.54	7.92	V/E
	mm	270.8	477.5	254.0	368.3	5.1	14.5	13.7	3.59	
493	inch	10.66	18.80	10.00	14.50	0.16	0.57	0.54	7.27	V/E
	mm	270.8	477.5	254.0	368.3	4.1	14.5	13.7	3.30	
487	inch	10.66	18.80	12.00	16.50	0.20	0.57	0.54	9.10	V/E
	mm	270.8	477.5	304.8	419.1	5.1	14.5	13.7	4.13	
494	inch	10.66	18.80	12.00	16.25	0.16	0.57	0.54	8.05	V/E
	mm	270.8	477.5	304.8	412.8	4.1	14.5	13.7	3.65	
467	inch	10.66	18.80	13.00	17.25	0.16	0.57	0.54	8.20	V/E
	mm	269.2	477.5	330.2	438.2	4.1	14.5	13.7	3.72	
488	inch	10.66	20.50	11.00	16.75	0.20	0.57	0.54	9.34	V/E
	mm	270.8	520.7	279.4	425.5	5.1	14.5	13.7	4.24	



NRM

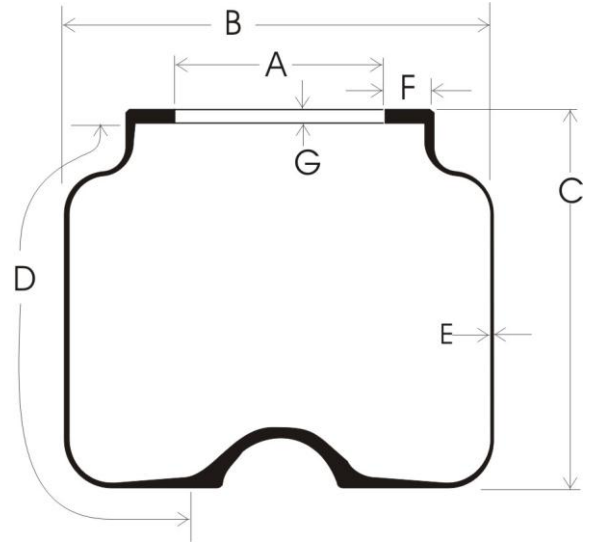
Autoform Bladder

Bagwell Size 12"/13"

Radial Design

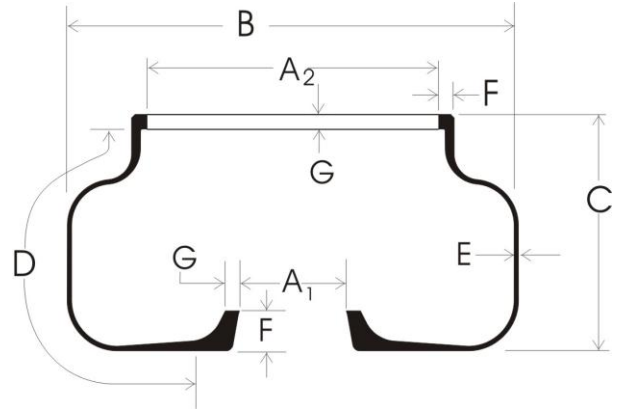
		SPECIFICATIONS								
BLADDER CODE		Foot ID	Outside Diameter	Overall Height	Usable Periphery	Crown Gauge	Foot		Weight lb. kilo.	Bladder Vents/ Etching
		A	B	C	D	E	Width F	Height G		
490	inch	10.66	20.50	11.00	16.50	0.16	0.57	0.54	8.15	V/E
	mm	270.8	520.7	279.4	419.1	4.1	14.5	13.7	3.70	
489	inch	10.66	20.50	12.50	18.00	0.20	0.57	0.54	9.82	V/E
	mm	270.8	520.7	317.5	457.2	5.1	14.5	9.0	4.45	
492	inch	10.66	20.50	12.50	18.00	0.16	0.57	0.54	8.66	V/E
	mm	270.8	520.7	317.5	457.2	4.1	14.5	13.7	3.93	
496	inch	10.66	22.00	16.10	22.25	0.20	0.57	0.54	12.25	*V/E
	mm	270.8	558.8	408.9	565.2	5.1	14.5	13.7	5.56	
472	inch	10.66	22.40	16.10	22.25	0.16	0.57	0.54	11.52	V/E
	mm	270.8	569.0	408.9	565.2	4.1	14.5	13.7	5.23	
497	inch	10.66	22.00	17.10	23.25	0.20	0.57	0.54	12.35	*V/E
	mm	270.8	558.8	434.3	590.6	5.1	14.5	13.7	5.60	
473	inch	10.66	22.40	17.10	23.25	0.16	0.57	0.54	11.87	V/E
	mm	270.8	569.0	434.3	590.6	4.1	14.5	13.7	5.38	
498	inch	10.66	22.00	19.10	25.25	0.20	0.57	0.54	14.50	V/E
	mm	270.8	558.8	485.1	641.4	5.1	14.5	13.7	6.58	
459	inch	10.66	20.50	14.00	19.50	0.16	0.57	0.54	9.10	V/E
	mm	270.8	520.7	355.6	495.3	4.1	14.5	13.7	4.13	

NRM
Autoform Bladder
Bagwell Size 12"/13"
Bias Design



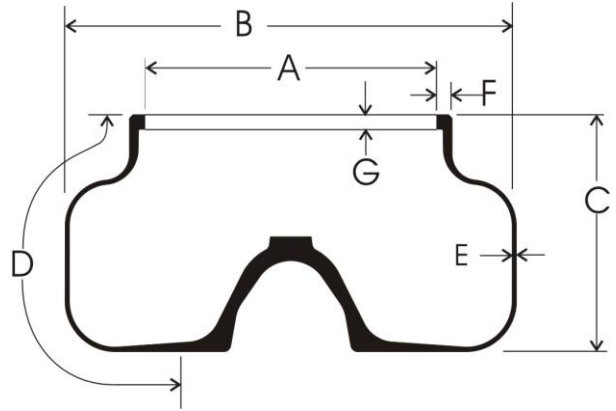
BLADDER CODE		SPECIFICATIONS								Bladder Vents/ Etching
		Foot ID	Outside Diameter	Overall Height	Usable Periphery	Crown Gauge	Foot		Weight lb. kilo.	
		A	B	C	D	E	Width F	Height G		
743	inch	10.66	16.50	20.00	22.50	0.27	0.57	0.54	13.52	V
	mm	270.8	419.1	508.0	571.5	6.9	14.5	13.7	6.13	
744	inch	10.66	16.50	23.00	25.50	0.27	0.57	0.54	15.00	V
	mm	270.8	419.1	584.2	647.7	6.9	14.5	13.7	6.80	
745	inch	10.66	16.50	24.25	26.75	0.27	0.57	0.54	16.50	V
	mm	270.8	419.1	616.0	679.5	6.9	14.5	13.7	7.48	
746	inch	10.66	14.90	16.38	18.27	0.26	0.57	0.54	10.25	V
	mm	270.8	378.5	416.1	464.1	6.6	14.5	13.7	4.65	

NRM
Autolock Bladder
Bagwell Size 20"



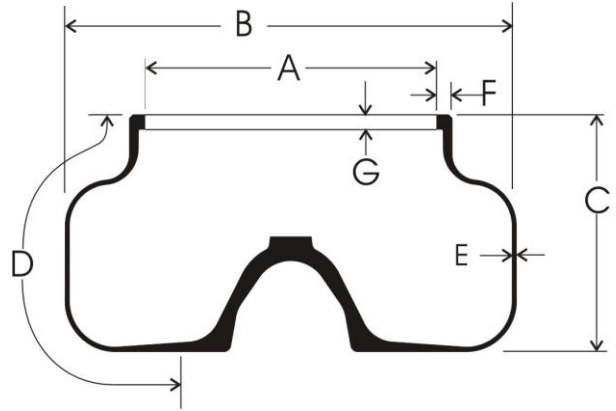
BLADDER CODE		SPECIFICATIONS									
		Foot ID	Foot ID	Outside Diameter	Overall Height	Usable Periphery	Crown Gauge	Foot		Weight lb. kilo.	Bladder Vents/ Etching
		A1	A2	B	C	D	E	Width F	Height G		
700	inch	13.25	15.99	31.25	15.92	25.72	0.32	0.88	0.80	26.13	V
	mm	336.6	406.1	793.8	404.4	653.3	8.1	22.4	20.3	11.85	
701	inch	13.25	15.99	31.25	17.82	27.62	0.32	0.88	0.80	28.50	V
	mm	336.6	406.1	793.8	452.6	701.5	8.1	22.4	20.3	12.93	

**NRM
Autoform Bladder
Bagwell Size 17"**



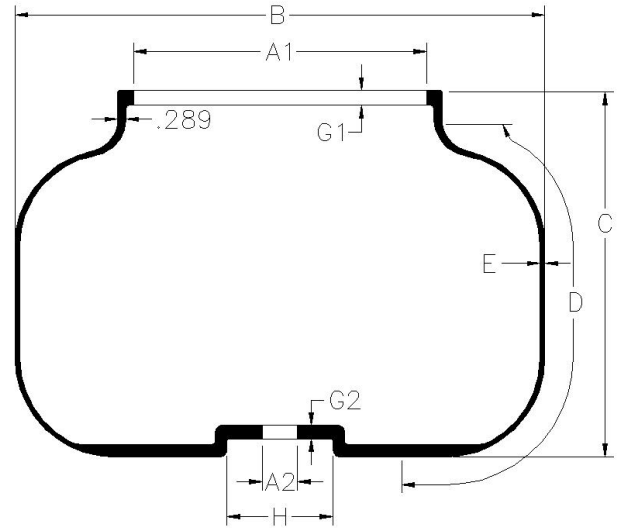
BLADDER CODE		SPECIFICATIONS								
		Foot ID A	Outside Diameter B	Overall Height C	Usable Periphery D	Crown Gauge E	Foot		Weight lb. kilo.	Bladder Vents/ Etching
							Width F	Height G		
495	inch	13.61	23.00	27.00	31.00	0.50	0.88	0.80	40.55	E
	mm	345.7	584.2	685.8	787.4	12.7	22.4	20.3	18.39	
716	inch	13.61	23.00	22.50	25.09	0.50	0.88	0.80	35.46	V
	mm	345.7	584.2	571.5	637.3	12.7	22.4	20.3	16.08	
717	inch	13.61	23.00	25.50	28.09	0.50	0.88	0.80	39.73	V
	mm	345.7	584.2	647.7	713.5	12.7	22.4	20.3	18.02	
718	inch	13.61	26.00	19.50	26.82	0.50	0.88	0.80	34.95	V
	mm	345.7	660.4	495.3	681.2	12.7	22.4	20.3	15.85	

NRM Autoform Bladder Bagwell Size 20"



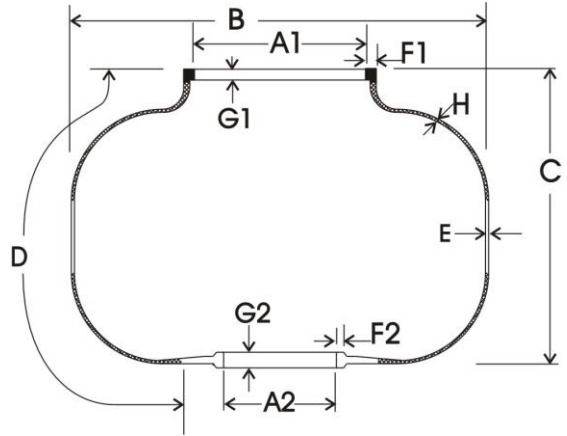
BLADDER CODE		SPECIFICATIONS								
		Foot ID A	Outside Diameter B	Overall Height C	Usable Periphery D	Crown Gauge E	Foot		Weight lb. kilo.	Bladder Vents/ Etching
							Width F	Height G		
710	inch	15.99	31.25	15.92	28.35	0.32	0.88	0.80	28.30	V
	mm	406.1	793.8	404.4	720.1	8.1	22.4	20.3	12.84	
711	inch	15.99	31.25	17.82	30.25	0.32	0.88	0.80	30.63	V
	mm	406.1	793.8	452.6	768.4	8.1	22.4	20.3	13.89	
720	inch	15.99	24.03	23.00	28.97	0.43	0.88	0.80	32.10	V
	mm	406.1	610.4	584.2	735.8	10.9	22.4	20.3	14.56	
721	inch	15.99	26.00	23.00	29.47	0.40	0.88	0.80	34.62	V
	mm	406.1	660.4	584.2	748.5	10.2	22.4	20.3	15.70	
722	inch	15.99	26.00	26.00	32.47	0.40	0.88	0.80	38.65	V
	mm	406.1	660.4	660.4	824.7	10.2	22.4	20.3	17.53	
723	inch	15.99	26.00	29.00	35.47	0.40	0.88	0.80	42.43	V
	mm	406.1	660.4	736.6	900.9	10.2	22.4	20.3	19.25	
724	inch	15.99	26.00	32.00	38.47	0.40	0.88	0.80	46.20	V
	mm	406.1	660.4	812.8	977.1	10.2	22.4	20.3	20.96	

Autoform Standing Post Bladder



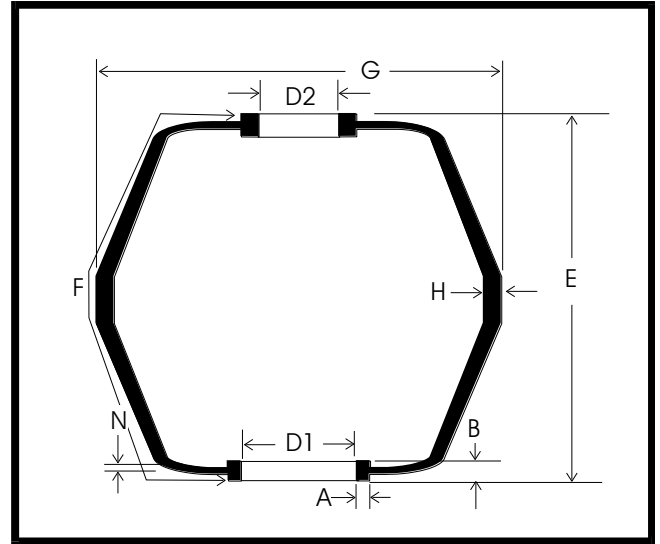
SPECIFICATIONS													
BLADDER CODE		Foot ID	Foot ID	Outside Diameter	Overall Height	Usable Periphery	Crown Gauge	Foot				Weight lb. kilo.	Bladder Vents/ Etching
		A1	A2	B	C	D	E	Width F	Width H	Height G1	Height G2		
921	inch	10.39	1.25	18.80	10.00	14.34	0.17	0.54	3.75	0.53	0.49	7.18	V/E
	mm	264.0	31.8	477.5	254.0	364.3	4.2	13.7	95.3	13.3	12.4	3.26	
922	inch	10.39	1.25	18.80	13.00	17.34	0.17	0.54	3.75	0.53	0.49	8.13	V/E
	mm	264.0	31.8	477.5	330.2	440.5	4.2	13.7	95.3	13.3	12.4	3.69	

Kobe Style Bladders



SPECIFICATIONS													
BLADDER CODE		Foot ID	Foot ID	Outside Diameter	Overall Height	Usable Periphery	Crown Gauge	Foot				Weight lb. kilo.	Bladder Vents/ Etching
		A1	A2	B	C	D	E	Width F1	Width F2	Height G1	Height G2		
901	inch	9.11	6.00	21.50	12.93	20.80	0.17	0.50	0.50	0.59	0.85	8.65	V / E
	mm	231.4	152.4	546.1	328.4	528.3	4.2	12.7	12.7	15.0	21.6	3.92	
902	inch	9.11	6.00	22.20	17.00	25.50	0.17	0.50	0.50	0.68	0.85	10.32	V / E
	mm	231.4	152.4	563.9	431.8	647.7	4.3	12.7	12.7	17.3	21.6	4.68	
903	inch	9.11	6.00	22.20	17.00	25.50	0.20	0.50	0.50	0.68	0.85	12.58	V / E
	mm	231.4	152.4	563.9	431.8	647.7	5.1	12.7	12.7	17.3	21.6	5.71	
904	inch	10.50	7.50	25.25	17.70	25.28	0.24	0.57	0.56	0.54	0.82	16.27	V / E
	mm	266.7	190.5	641.4	449.6	642.1	6.1	14.5	14.2	13.7	20.9	7.38	
911	inch	8.92	6.12	20.87	12.48	21.35	0.17	0.70	0.50	0.74	0.82	9.21	V / E
	mm	226.6	155.4	530.1	317.0	542.3	4.3	17.8	12.7	18.8	20.8	4.18	

Krupp Style Bladders



SPECIFICATIONS												
BLADDER CODE		I.D.	I.D.	Bladder Height E	Usable Periphery F	Outside Diameter G	Gauge		Foot		Weight lb. kilo.	Bladder Vents/ Etching
		CLAMP D1	CLAMP D2				Neck N	Center H	Width A	Height B		
801	inch	8.87	6.69	12.75	17.80	19.40	0.38	0.16	0.50	0.93	8.00	V/E
	mm	225.3	169.9	323.9	452.2	492.8	9.7	4.1	12.7	23.6	3.63	
802	inch	8.87	6.69	15.15	20.68	22.00	0.35	0.16	0.42	0.94	9.50	V/E
	mm	225.3	169.9	384.8	525.2	558.8	9.0	4.1	10.8	23.9	4.31	

Packaging Specifications

BLADDER CODE		SPECIFICATIONS			Quantity per Box
		Bladder Weight	Full Box Weight		
			Domestic	Export	
300	LBS	5.83	352	357	50
	KILOS	2.6	160	162	
301	LBS	8.07	464	469	50
	KILOS	3.7	210	213	
304	LBS	4.31	405	410	80
	KILOS	2.0	184	186	
305	LBS	4.26	273	278	50
	KILOS	1.9	124	126	
306	LBS	2.90	431	436	128
	KILOS	1.3	195	198	
307	LBS	7.92	258	263	25
	KILOS	3.6	117	119	
308	LBS	7.25	292	297	32
	KILOS	3.3	132	135	
309	LBS	1.38	446	451	280
	KILOS	0.6	202	205	
310	LBS	4.66	284	289	48
	KILOS	2.1	129	131	
311	LBS	3.32	525	530	140
	KILOS	1.5	238	240	
312	LBS	5.29	229	234	32
	KILOS	2.4	104	106	
313	LBS	4.41	325	330	60
	KILOS	2.0	147	150	
315	LBS	1.54	445	450	250
	KILOS	0.7	202	204	
316	LBS	9.52	298	303	25
	KILOS	4.3	135	137	

		Width	Length	Height
Box/ Skid	inch	42	48	35
Measurements	mm	1066.8	1219.2	889.0

BLADDER CODE		SPECIFICATIONS			Quantity per Box
		Bladder Weight	Full Box Weight		
			Domestic	Export	
317	LBS	10.79	438	443	35
	KILOS	4.9	199	201	
319	LBS	20.23	363	358	15
	KILOS	9.2	165	162	
320	LBS	10.25	418	423	35
	KILOS	4.6	190	192	
322	LBS	14.54	424	429	25
	KILOS	6.6	192	195	
323	LBS	25.66	445	450	15
	KILOS	11.6	202	204	
324	LBS	12.64	376	381	25
	KILOS	5.7	171	173	
325	LBS	10.62	326	330	25
	KILOS	4.8	148	150	
326	LBS	8.44	313	318	30
	KILOS	3.8	142	144	
327	LBS	10.86	385	390	30
	KILOS	4.9	175	177	
328	LBS	18.16	514	519	25
	KILOS	8.2	233	235	
329	LBS	9.10	333	338	30
	KILOS	4.1	151	153	
330	LBS	10.51	428	433	35
	KILOS	4.8	194	196	
331	LBS	11.51	463	468	35
	KILOS	5.2	210	212	
332	LBS	20.24	566	571	25
	KILOS	9.2	257	259	
333	LBS	11.44	460	465	35
	KILOS	5.2	209	211	
336	LBS	9.33	340	345	30
	KILOS	4.2	154	156	
338	LBS	3.46	371	376	90
	KILOS	1.6	168	171	
339	LBS	10.73	382	387	30
	KILOS	4.9	173	176	
340	LBS	2.95	355	360	100
	KILOS	1.3	161	163	
344	LBS	4.7	295	300	50
	KILOS	2.1	134	136	

Packaging Specifications

BLADDER CODE		SPECIFICATIONS			Quantity per Box
		Bladder Weight	Full Box Weight		
			Domestic	Export	
350	LBS	3.55	380	385	90
	KILOS	1.6	172	175	
351	LBS	4.51	331	336	60
	KILOS	2.0	150	152	
352	LBS	5.85	294	299	40
	KILOS	2.7	133	136	
353	LBS	6.67	327	332	40
	KILOS	3.0	148	151	
354	LBS	13.55	398	403	25
	KILOS	6.1	181	183	
355	LBS	18.62	339	344	15
	KILOS	8.4	154	156	
356	LBS	22.85	403	408	15
	KILOS	10.4	183	185	
459	LBS	9.10	515	520	50
	KILOS	4.1	234	236	
465	LBS	2.70	330	335	100
	KILOS	1.2	150	152	
467	LBS	8.20	470	475	50
	KILOS	3.7	213	215	
468	LBS	7.20	492	497	60
	KILOS	3.3	223	225	
470	LBS	6.50	515	520	70
	KILOS	2.9	234	236	
471	LBS	7.82	530	534	60
	KILOS	3.5	240	242	
472	LBS	11.52	463	468	35
	KILOS	5.2	210	212	
473	LBS	11.87	475	480	35
	KILOS	5.4	215	218	
474	LBS	11.97	479	484	35
	KILOS	5.4	217	220	
475	LBS	12.31	491	496	35
	KILOS	5.6	223	225	
476	LBS	10.10	414	419	35
	KILOS	4.6	188	190	

BLADDER CODE		SPECIFICATIONS			Quantity per Box
		Bladder Weight	Full Box Weight		
			Domestic	Export	
479	LBS	11.42	460	465	35
	KILOS	5.2	209	211	
480	LBS	7.83	334	339	35
	KILOS	3.6	152	154	
481	LBS	12.14	485	490	35
	KILOS	5.5	220	222	
482	LBS	11.14	450	455	35
	KILOS	5.1	204	206	
483	LBS	11.20	452	457	35
	KILOS	5.1	205	207	
484	LBS	11.11	449	454	35
	KILOS	5.0	204	206	
485	LBS	12.05	482	487	35
	KILOS	5.5	219	221	
486	LBS	7.92	456	461	50
	KILOS	3.6	207	209	
487	LBS	9.10	515	520	50
	KILOS	4.1	234	236	
488	LBS	9.34	527	532	50
	KILOS	4.2	239	241	
489	LBS	9.82	551	556	50
	KILOS	4.5	250	252	
490	LBS	8.15	468	473	50
	KILOS	3.7	212	215	
491	LBS	9.80	403	408	35
	KILOS	4.4	183	185	
492	LBS	8.80	500	505	50
	KILOS	4.0	227	229	
493	LBS	7.27	424	429	50
	KILOS	3.3	192	194	
494	LBS	8.05	463	468	50
	KILOS	3.7	210	212	
495	LBS	40.55	222	227	4
	KILOS	18.4	101	103	
496	LBS	12.25	489	494	35
	KILOS	5.6	222	224	
497	LBS	12.35	492	497	35
	KILOS	5.6	223	226	
498	LBS	14.5	568	573	35
	KILOS	6.6	257	260	
499	LBS	10.7	435	440	35
	KILOS	4.9	197	199	

		Width	Length	Height
Box/ Skid Measurements	inch	42	48	35
	mm	1067	1219	889.0

Packaging Specifications

		SPECIFICATIONS			
BLADDER CODE	Bladder Weight	Full Box Weight		Quantity per Box	
		Domestic	Export		
520	LBS	5.33	327	332	50
	KILOS	2.4	148	151	
521	LBS	5.78	349	354	50
	KILOS	2.6	158	161	
522	LBS	6.12	366	371	50
	KILOS	2.8	166	168	
523	LBS	6.14	367	372	50
	KILOS	2.8	166	169	
524	LBS	6.80	400	405	50
	KILOS	3.1	181	184	
525	LBS	8.38	460	465	50
	KILOS	3.8	209	211	
526	LBS	9.50	440	445	40
	KILOS	4.3	200	202	
527	LBS	7.02	365	370	50
	KILOS	3.2	166	168	
528	LBS	7.80	450	455	50
	KILOS	3.5	204	206	
529	LBS	9.96	450	455	30
	KILOS	4.5	204	206	
530	LBS	8.32	393	398	40
	KILOS	3.8	178	180	
600	LBS	1.45	466	471	280
	KILOS	0.7	211	214	
601	LBS	1.84	318	323	140
	KILOS	0.8	144	147	
602	LBS	1.83	518	523	250
	KILOS	0.8	235	237	
603	LBS	2.76	336	341	100
	KILOS	1.3	152	155	
604	LBS	4.17	310	315	60
	KILOS	310.0	141	143	

		Width	Length	Height
Box/ Skid Measurements	inch	42	48	35
	mm	1067	1219	889.0

		SPECIFICATIONS			
BLADDER CODE	Bladder Weight	Full Box Weight		Quantity per Box	
		Domestic	Export		
605	LBS	3.85	291	296	60
	KILO	1.7	132	134	
606	LBS	2.35	342	347	120
	KILO	1.1	155	157	
607	LBS	3.02	302	307	80
	KILO	1.4	137	139	
608	LBS	3.80	250	255	50
	KILO	1.7	113	116	
609	LBS	4.33	320	325	60
	KILO	2.0	145	147	
610	LBS	5.93	297	302	40
	KILO	2.7	135	137	
611	LBS	3.70	282	287	60
	KILO	1.7	128	130	
612	LBS	4.65	293	298	50
	KILO	2.1	133	135	
613	LBS	5.85	294	299	40
	KILO	2.7	133	136	
614	LBS	6.76	297	302	35
	KILO	3.1	135	137	
615	LBS	7.94	338	343	35
	KILO	3.6	153	156	
616	LBS	8.90	372	377	35
	KILO	4.0	169	171	
617	LBS	4.55	206	211	32
	KILO	2.1	93	96	
618	LBS	18.00	276	281	12
	KILO	8.2	125	127	
619	LBS	5.35	253	258	36
	KILO	2.4	115	117	
620	LBS	6.57	290	295	35
	KILO	3.0	132	134	
621	LBS	8.28	350	355	35
	KILO	3.8	159	161	
622	LBS	9.88	406	411	35
	KILO	4.5	184	186	
623	LBS	12.17	486	491	35
	KILO	5.5	220	223	
624	LBS	13.92	408	413	25
	KILO	6.3	185	187	
625	LBS	7.34	427	432	50
	KILO	3.3	194	196	
626	LBS	8.54	359	364	35
	KILO	3.9	163	165	

Packaging Specifications

SPECIFICATIONS					
BLADDER CODE	Bladder Weight	Full Box Weight		Quantity per Box	
		Domestic	Export		
627	LBS	10.43	425	430	35
	KILOS	4.7	193	195	
628	LBS	11.60	466	471	35
	KILOS	5.3	211	214	
629	LBS	13.08	518	523	35
	KILOS	5.9	235	237	
630	LBS	16.18	465	470	25
	KILOS	7.3	211	213	
631	LBS	18.39	520	525	25
	KILOS	8.3	236	238	
632	LBS	14.14	414	419	25
	KILOS	6.4	188	190	
633	LBS	15.68	452	457	25
	KILOS	7.1	205	207	
634	LBS	18.98	535	540	15
	KILOS	8.6	243	245	
635	LBS	29.54	503	508	15
	KILOS	13.4	228	230	
636	LBS	39.78	657	662	15
	KILOS	18.0	298	300	
637	LBS	47.07	766	771	35
	KILOS	21.4	347	350	
638	LBS	14.65	573	578	35
	KILOS	6.6	260	262	
639	LBS	10.28	420	425	35
	KILOS	4.7	191	193	

		Width	Length	Height
Box/ Skid	inch	42	48	35
Measurements	mm	1066.8	1219.2	889.0

SPECIFICATIONS					
BLADDER CODE	Bladder Weight	Full Box Weight		Quantity per Box	
		Domestic	Export		
640	LBS	12.20	487	492	35
	KILO	5.5	221	223	
641	LBS	6.47	286	291	35
	KILO	2.9	130	132	
642	LBS	64.95	580	585	8
	KILO	29.5	263	265	
643	LBS	70.30	622	627	8
	KILO	31.9	282	284	
644	LBS	50.64	465	470	8
	KILO	23.0	211	213	
645	LBS	56.39	511	516	8
	KILO	25.6	232	234	
646	LBS	28.75	290	295	8
	KILO	13.0	132	134	
647	LBS	35.20	412	417	10
	KILO	16.0	187	189	
648	LBS	33.72	566	571	15
	KILO	15.3	257	259	
649	LBS	33.40	394	399	10
	KILO	15.1	179	181	
650	LBS	28.03	340	345	10
	KILO	12.7	154	156	
651	LBS	32.11	381	386	10
	KILO	14.6	173	175	
700	LBS	26.13	269	274	8
	KILO	11.9	122	124	
701	LBS	28.50	288	293	8
	KILO	12.9	131	133	
710	LBS	28.3	286	291	8
	KILO	12.8	130	132	
711	LBS	31.08	371	376	10
	KILO	14.1	168	171	
716	LBS	35.46	343	348	8
	KILO	16.1	156	158	
717	LBS	39.73	378	383	8
	KILO	18.0	171	174	
718	LBS	34.95	339	344	8
	KILO	15.9	154	156	
720	LBS	32.1	252	257	6
	KILO	14.6	114	117	
721	LBS	34.62	267	272	6
	KILO	15.7	121	123	

Packaging Specifications

BLADDER CODE		SPECIFICATIONS			
		Bladder Weight	Full Box Weight		Quantity per Box
			Domestic	Export	
722	LBS	38.65	291	296	6
	KILOS	17.5	132	134	
723	LBS	42.43	357	362	7
	KILOS	19.2	162	164	
724	LBS	46.20	383	388	7
	KILOS	21.0	174	176	
743	LBS	13.52	303	308	18
	KILOS	6.1	138	140	
744	LBS	15.00	330	335	18
	KILOS	6.8	150	152	
745	LBS	16.50	258	263	12
	KILOS	7.5	117	119	
746	LBS	10.25	368	373	30
	KILOS	4.6	167	169	
801	LBS	8.00	460	465	50
	KILOS	3.6	209	211	
802	LBS	9.50	440	445	40
	KILOS	4.3	200	202	
901	LBS	8.65	406	411	40
	KILOS	3.9	184	186	
902	LBS	10.32	473	478	40
	KILOS	4.7	214	217	
		Width	Length	Height	
Box/ Skid	inch	42	48	35	
Measurements	mm	1066.8	1219.2	889.0	

BLADDER CODE		SPECIFICATIONS			
		Bladder Weight	Full Box Weight		Quantity per Box
			Domestic	Export	
903	LBS	12.58	566	571	40
	KILOS	5.7	257	259	
904	LBS	16.27	548	553	30
	KILOS	7.4	249	251	
921	LBS	7.18	419	424	50
	KILOS	3.3	190	192	
922	LBS	8.13	467	472	50
	KILOS	3.7	212	214	
	LBS				
	KILOS				
	LBS				
	KILOS				
	LBS				
	KILOS				
	LBS				
	KILOS				
	LBS				
	KILOS				
	LBS				
	KILOS				
	LBS				
	KILOS				
	LBS				
	KILOS				
	LBS				
	KILOS				
	LBS				
	KILOS				
	LBS				
	KILOS				