

POLYMER INDUSTRIAL PRODUCTS CO., LLC.
PO BOX 310
688 INDUSTRIAL PARK ROAD
PINEY FLATS, TN 37686 U.S.A.
TEL: 423.538.5105 FAX: 423.538.3262
Email: sales@pipcousa.com

TURN-UP BLADDERS



Designed
to fit your
machines

PII **POLYMER**
INDUSTRIAL PRODUCTS CO.
LLC.

PIPCO
CURING & TURN-UP
BLADDERS

PIPCO[®] ELASTOMERIC
PRODUCTS

Catalog

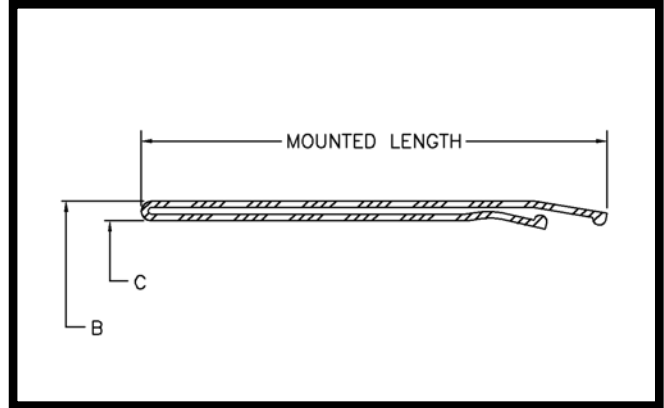


TABLE OF CONTENTS

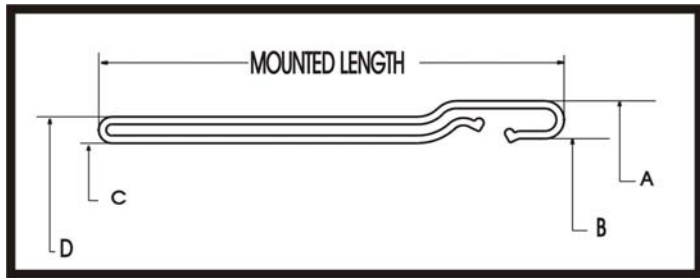
Turn-up Bladders	1 to 7
Sleeves	8 to 21
Miscellaneous	22-24

POLYMER INDUSTRIAL PRODUCTS CO., LLC.
PO BOX 310
688 INDUSTRIAL PARK ROAD
PINEY FLATS, TN 37686 U.S.A.
TEL: 423.538.5105 FAX: 423.538.3262
Email: sales@pipcousa.com

NRM STYLE Inner Turn-Up Bladder



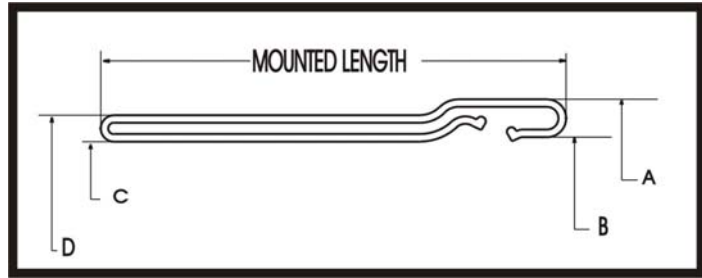
PRODUCT CODE	DESCRIPTION	MOUNTED LENGTH		OD "B"		ID "C"	
		in.	mm.	in.	mm.	in.	mm.
TN111	12" INNER BLADDER	6.50	165	8.25	210	7.50	191
TN112	12"/13" INNER BLADDER	6.75	171	9.25	235	8.50	216
TN113	13" INNER BLADDER	6.75	171	9.25	235	8.50	216
TN114	14" INNER BLADDER	7.50	191	10.25	260	9.50	241
TN115	15" INNER BLADDER	7.50	191	11.25	286	10.50	267
TN116	16" INNER BLADDER	7.50	191	12.25	311	11.50	292
TN117	17" INNER BLADDER	7.50	191	13.25	337	12.50	318
TN118	18" INNER BLADDER	7.50	191	14.25	362	13.50	343
TN119	19" INNER BLADDER	7.50	191	15.25	387	14.50	368
TN120	20" INNER BLADDER	10.25	260	13.63	346	13.00	330
TN122	22" INNER BLADDER	10.25	260	15.63	397	15.00	381
TN124	24" INNER BLADDER	10.25	260	17.63	448	17.00	432



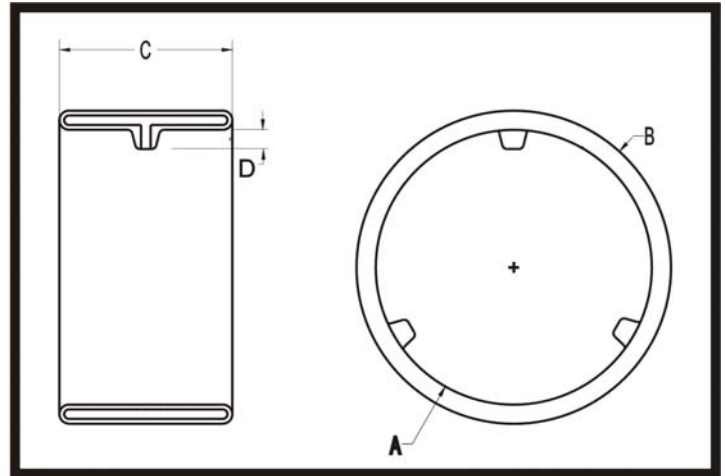
NRM STYLE Outer Turn-Up Bladder

PART CODE	DESCRIPTION	FRONT OD "A"		FRONT ID "B"		REAR ID "C"		REAR OD "D"		MOUNTED LENGTH	
		in.	mm.	in.	mm.	in.	mm.	in.	mm.	in.	mm.
TN212	12" OUTER	11.25	285.75	10.50	266.70	9.25	234.95	10.00	254.00	8.00	203.20
TN213	13" OUTER	11.75	298.45	10.50	266.70	9.25	234.95	10.00	254.00	8.00	203.20
TN214	14" OUTER	12.75	323.85	11.50	292.10	10.25	260.35	11.00	279.40	8.00	203.20
TN215	15" OUTER	13.75	349.25	12.50	317.50	11.25	285.75	12.00	304.80	8.00	203.20
TN216	16" OUTER	14.75	374.65	13.50	342.90	12.25	311.15	13.00	330.20	8.50	215.90
TN217	17" OUTER	15.75	400.05	14.50	368.30	13.25	336.55	14.00	355.60	8.00	203.20
TN218	17"/18" OUTER	16.00	406.40	14.25	361.95	13.25	336.55	15.75	400.05	8.00	203.20
TN219	17"/19" OUTER	17.00	431.80	14.25	361.95	13.25	336.55	16.75	425.45	8.00	203.20
TN220	20" OUTER	17.75	450.85	16.50	419.10	14.13	358.78	16.00	406.40	12.00	304.80
TN222	22" OUTER	19.75	501.65	18.50	469.90	16.13	409.58	18.00	457.20	12.00	304.80
TN224	24" OUTER	21.75	552.45	20.50	520.70	18.13	460.38	20.00	508.00	12.00	304.80
TN012	12" (TRUE) OUTER	10.25	260.35	9.50	241.30	8.25	209.55	9.00	228.60	8.00	203.20
TN016	16" OUTER SHORT	14.75	374.65	13.50	342.90	12.25	311.15	13.00	330.20	8.00	203.20
TN018	18" OUTER	16.75	425.45	15.50	393.70	14.25	361.95	15.00	381.00	8.00	203.20
TN019	19" OUTER	17.25	438.15	16.50	419.10	15.25	387.35	16.00	406.40	9.75	247.65
TN312	12" SINGLE SHORT(TAPER)	11.25	285.75	10.25	260.35	9.25	234.95	10.00	254.00	8.00	203.20
TN313	13" SINGLE SHORT (ESS)	11.25	285.75	10.50	266.70	9.25	234.95	10.00	254.00	8.00	203.20
TN314	14" SINGLE SHORT (ESS)	12.25	311.15	11.50	292.10	10.25	260.35	11.00	279.40	8.00	203.20
TN315	15" SINGLE SHORT (ESS)	13.25	336.55	12.50	317.50	11.25	285.75	12.00	304.80	8.00	203.20
TN415	15" OUTER LONG	13.75	349.25	12.50	317.50	11.25	285.75	12.00	304.80	9.25	234.95
TN416	16" OUTER LONG	14.75	374.65	13.50	342.90	12.25	311.15	13.00	330.20	9.75	247.65
TN513	13" SINGLE (ESLF)	11.25	285.75	10.50	266.70	9.25	234.95	10.00	254.00	9.25	234.95
TN514	14" SINGLE (ESLF)	12.25	311.15	11.50	292.10	10.25	260.35	11.00	279.40	9.25	234.95
TN515	15" SINGLE (ESLF)	13.25	336.55	12.50	317.50	11.25	285.75	12.00	304.80	9.25	234.95
TN516	16" SINGLE (ESLF)	14.25	361.95	13.50	342.90	12.25	311.15	13.00	330.20	9.25	234.95
TN517	17" SINGLE	15.25	387.35	14.50	368.30	13.25	336.55	14.00	355.60	10.00	254.00
TN518	18" SINGLE	16.25	412.75	15.50	393.70	14.25	361.95	15.00	381.00	9.75	247.65
TN519	19" SINGLE	17.25	438.15	16.50	419.10	15.25	387.35	16.00	406.40	9.75	247.65
TN520	20" SINGLE	18.25	463.55	17.50	444.50	16.25	412.75	17.00	431.80	9.75	247.65
TN521	21" SINGLE	19.25	488.95	18.50	469.90	17.25	438.15	18.00	457.20	9.75	247.65
TN613	13" MEDIUM SINGLE TUB	11.25	285.75	10.50	266.70	9.25	234.95	10.00	254.00	8.90	226.06
TN614	14" MEDIUM SINGLE TUB	12.25	311.15	11.50	292.10	10.25	260.35	11.00	279.40	8.90	226.06
TN615	15" MEDIUM SINGLE TUB	13.25	336.55	12.50	317.50	11.25	285.75	12.00	304.80	8.90	226.06
TN616	16" MEDIUM SINGLE TUB	14.25	361.95	13.50	342.90	12.25	311.15	13.00	330.20	8.90	226.06
TN715	15" OUTER LONG SINGLE HP	13.75	349.25	12.50	317.50	11.25	285.75	12.00	304.80	9.25	234.95
TN716	16" OUTER LONG SINGLE HP	14.75	374.65	13.50	342.90	12.25	311.15	13.00	330.20	8.50	215.90
TN914	14" SINGLE DUAL RELEASE	12.25	311.15	11.50	292.10	10.25	260.35	11.00	279.40	9.25	234.95
TN915	15" SINGLE DUAL RELEASE	13.25	336.55	12.50	317.50	11.25	285.75	12.00	304.80	9.25	234.95
TN916	16" SINGLE DUAL RELEASE	14.25	361.95	13.50	342.90	12.25	311.15	13.00	330.20	9.25	234.95

NRM STYLE Outer Turn-Up Bladder



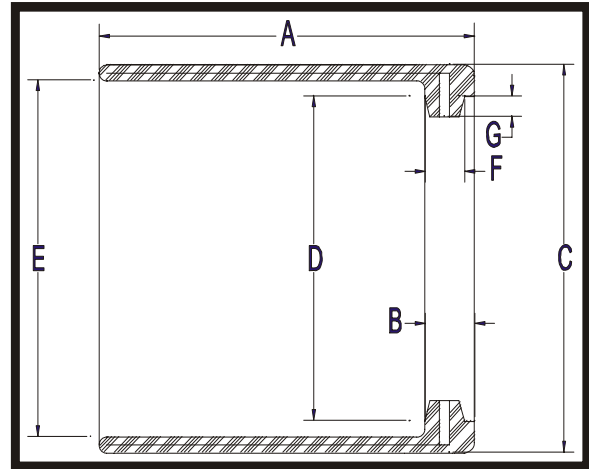
PART CODE	DESCRIPTION	FRONT OD "A"		FRONT ID "B"		REAR ID "C"		REAR OD "D"		MOUNTED LENGTH	
		in.	mm.	in.	mm.	in.	mm.	in.	mm.	in.	mm.
TNC12	12" TRUE SINGLE	10.25	260.35	9.50	241.30	8.25	209.55	9.00	228.60	8.00	203.20
TNC16	16" OUTER SHORT SINGLE	14.75	374.65	13.50	342.90	12.25	311.15	13.00	330.20	8.00	203.20
TNC17	17" OUTER SINGLE	15.75	400.05	14.25	361.95	13.25	336.55	14.00	355.60	8.00	203.20
TND15	15" EXTRA-LONG SINGLE	13.75	349.25	12.50	317.50	11.25	285.75	12.00	304.80	10.75	273.05
TND16	16" EXTRA-LONG SINGLE	14.75	374.65	13.50	342.90	12.25	311.15	13.00	330.20	9.75	247.65
TND18	18" EXTRA-LONG SINGLE	16.75	425.45	15.50	393.70	14.25	361.95	15.00	381.00	10.75	273.05
TNE12	12" OUTER, SINGLE CONST. HP	10.75	273.05	9.50	241.30	8.25	209.55	9.00	228.60	8.00	203.20
TNE13	13" OUTER, SINGLE CONST. HP	11.75	298.45	10.50	266.70	9.25	234.95	10.00	254.00	8.00	203.20
TNE14	14" OUTER, SINGLE CONST. HP	12.75	323.85	11.50	292.10	10.25	260.35	11.00	279.40	8.00	203.20
TNE15	15" OUTER, SINGLE CONST. HP	13.75	349.25	12.50	317.50	11.25	285.75	12.00	304.80	8.00	203.20
TNE16	16" OUTER, SINGLE CONST. HP	14.75	374.65	13.50	342.90	12.25	311.15	13.00	330.20	8.50	215.90
TNE18	18" OUTER, SINGLE CONST.	16.75	425.45	15.50	393.70	14.25	361.95	15.00	381.00	8.00	203.20
TNE20	20" OUTER, SINGLE CONST.	17.75	450.85	16.50	419.10	14.13	358.78	16.00	406.40	12.00	304.80
TNE22	22" OUTER, SINGLE CONST.	19.75	501.65	18.50	469.90	16.13	409.58	18.00	457.20	12.00	304.80
TNE24	24" OUTER, SINGLE CONST.	21.75	552.45	20.50	520.70	18.13	460.38	20.00	508.00	12.00	304.80
TNF13	13" ESLF W/ HEA VY GIRDLE	11.25	285.75	10.50	266.70	9.25	234.95	10.00	254.00	9.25	234.95
TNF14	14" ESLF W/ HEA VY GIRDLE	12.25	311.15	11.50	292.10	10.25	260.35	11.00	279.40	9.25	234.95
TNF15	15" ESLF W/ HEA VY GIRDLE	13.25	336.55	12.50	317.50	11.25	285.75	12.00	304.80	9.25	234.95
TNG13	13" ESS W/ HEA VY GIRDLE	11.25	285.75	10.50	266.70	9.25	234.95	10.00	254.00	8.00	203.20
TNG14	14" ESS W/ HEA VY GIRDLE	12.25	311.15	11.50	292.10	10.25	260.35	11.00	279.40	8.00	203.20
TNG15	15" ESS W/ HEA VY GIRDLE	13.25	336.55	12.50	317.50	11.25	285.75	12.00	304.80	8.00	203.20
TNP13	13" EXTRA LONG SINGLE, HP.	11.75	298.45	10.50	266.70	9.25	234.95	10.00	254.00	10.60	269.24
TNP14	14" EXTRA LONG SINGLE, HP.	12.75	323.85	11.50	292.10	10.25	260.35	11.00	279.40	10.60	269.24
TNP15	15" EXTRA LONG SINGLE, HP.	13.75	349.25	12.50	317.50	11.25	285.75	12.00	304.80	10.60	269.24
TNP16	16" EXTRA LONG SINGLE, HP.	14.75	374.65	13.50	342.90	12.25	311.15	13.00	330.20	10.60	269.24
TNP17	17" EXTRA LONG SINGLE, HP.	15.75	400.05	14.50	368.30	13.25	336.55	14.00	355.60	10.60	269.24
TNP18	18" EXTRA LONG SINGLE, HP.	16.75	425.45	15.50	393.70	14.25	361.95	15.00	381.00	10.60	269.24
TNP19	19" EXTRA LONG SINGLE, HP.	17.75	450.85	16.50	419.10	15.25	387.35	16.00	406.40	10.60	269.24
TNP20	20" EXTRA LONG SINGLE, HP.	18.75	476.25	17.50	444.50	16.25	412.75	17.00	431.80	10.60	269.24
TNP22	22" EXTRA LONG SINGLE, HP.	20.75	527.05	19.50	495.30	18.25	463.55	19.00	482.60	10.60	269.24
TNP23	23" EXTRA LONG SINGLE, HP.	21.75	552.45	20.50	520.70	19.25	488.95	20.00	508.00	10.60	269.24
TNP24	24" EXTRA LONG SINGLE, HP.	22.75	577.85	21.50	546.10	20.25	514.35	21.00	533.40	10.60	269.24
TNQ18	18" SHORT NOSE SINGLE, HP	16.75	425.45	15.50	393.70	14.25	361.95	15.00	381.00	8.00	203.20
TNR15	15" EXTENDED LENGTH, HP	13.75	349.25	12.50	317.50	11.25	285.75	12.00	304.80	13.60	345.44
TNS17	17" MED. LENGTH SINGLE	15.25	387.35	14.50	368.30	13.25	336.55	14.00	355.60	8.50	215.90
TNS20	20" MED. LENGTH SINGLE	18.25	463.55	17.50	444.50	16.25	412.75	17.00	431.80	8.50	215.90
TN813	13" MED. LENGTH SINGLE, HP	11.75	298.45	10.50	266.70	9.25	234.95	10.00	254.00	8.90	226.06
TN814	14" MED. LENGTH SINGLE, HP	12.75	323.85	11.50	292.10	10.25	260.35	11.00	279.40	8.90	226.06
TN815	15" MED. LENGTH SINGLE, HP	13.75	349.25	12.50	317.50	11.25	285.75	12.00	304.80	8.90	226.06
TN816	16" MED. LENGTH SINGLE, HP	14.75	374.65	13.50	342.90	12.25	311.15	13.00	330.20	8.90	226.06



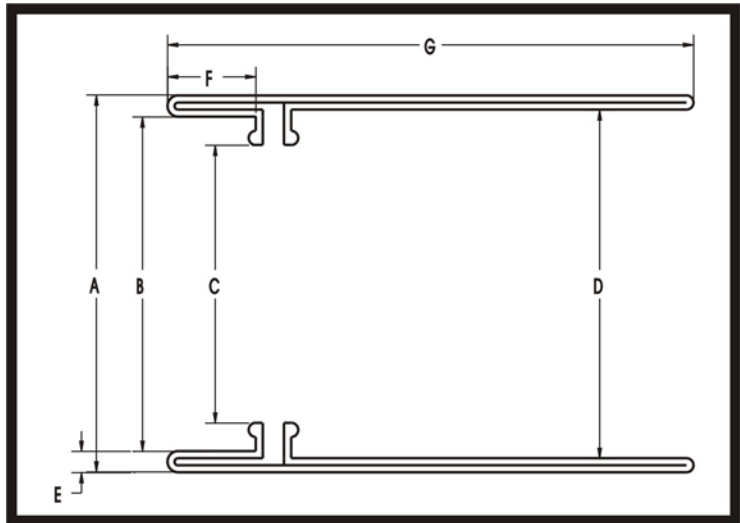
Expander Bladder

PART CODE	DESCRIPTION	ID "A"		OD "B"		WIDTH "C"		VALVE HGT. "D"		# OF VALVES
		in.	mm.	in.	mm.	in.	mm.	in.	mm.	
QP984	EB-11 EXPANDER BLADDER	1.750	44.45	2.250	57.15	2.750	69.85	0.100	2.54	2
QP985	EB-10 EXPANDER BLADDER	1.750	44.45	2.250	57.15	2.000	50.80	0.100	2.54	2
QP986	EB-2 WIDE EXP. BLADDER	10.700	271.78	11.650	295.91	3.750	95.25	0.500	12.70	3
QP987	EB-17 EXPANDER BLADDER	4.625	117.48	5.100	129.54	1.665	42.29	0.100	2.54	2
QP988	EB-21A EXPANDER BLADDER	6.900	175.26	7.700	195.58	2.875	73.03	0.500	12.70	3
QP989	EB-15 EXPANDER BLADDER	4.420	112.27	5.000	127.00	1.815	46.10	0.475	12.07	2
QP990	EB-18 EXPANDER BLADDER	6.000	152.40	6.600	167.64	1.682	42.72	0.500	12.70	2
QP991	EB-19A EXPANDER BLADDER	5.300	134.62	6.000	152.40	3.250	82.55	0.475	12.07	3
QP992	EB-23 EXPANDER BLADDER	18.000	457.20	19.250	488.95	4.250	107.95	2.000	50.80	1
QP993	EB-5 EXPANDER BLADDER	8.300	210.82	9.100	231.14	2.600	66.04	0.450	11.43	3
QP994	EB-19 EXPANDER BLADDER	5.300	134.62	6.000	152.40	4.900	124.46	0.475	12.07	3
QP995	EB-4 EXPANDER BLADDER	17.625	447.68	18.625	473.08	3.600	91.44	0.500	12.70	3
QP996	EB-3 EXPANDER BLADDER	13.500	342.90	14.500	368.30	3.750	95.25	0.465	11.81	3
QP997	EB-2 EXPANDER BLADDER	10.700	271.78	11.650	295.91	3.375	85.73	0.500	12.70	3
QP998	EB-21 EXPANDER BLADDER	6.900	175.26	8.000	203.20	2.875	73.03	0.500	12.70	3
QP999	EB-1 EXPANDER BLADDER	9.600	243.84	10.600	269.24	2.875	73.03	0.500	12.70	3

UNIROYAL STYLE Turn-Up Bladder

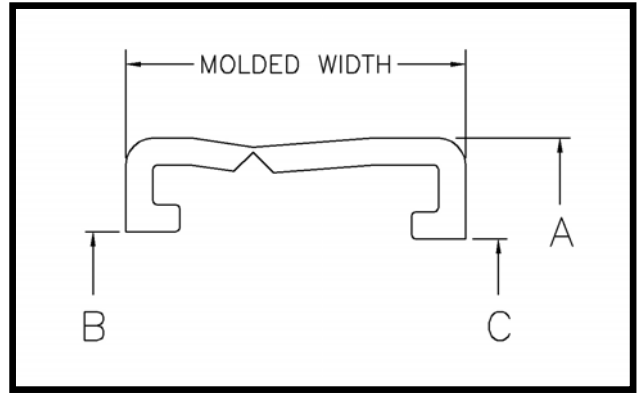


PART CODE	DESCRIPTION	OAL "A"		BEAD "B"		OD "C"		BEAD ID "D"		REAR ID "E"		VALVE DIA "F"		VALVE HGT "G"	
		in.	mm.	in.	mm.	in.	mm.	in.	mm.	in.	mm.	in.	mm.	in.	mm.
TU510	10" UNIROYAL TUB	8.5	216	1.38	35	8.575	218	7.175	182	7.94	202	1	25	0.5	13
TU512	12" UNIROYAL TUB	8.5	216	1.38	35	10.58	269	9.175	233	9.94	252	1	25	0.5	13
TU513	13" UNIROYAL TUB	8.5	216	1.38	35	11.58	294	10.18	258	10.9	278	1	25	0.5	13
TU514	14" UNIROYAL TUB	8.5	216	1.38	35	12.58	319	11.18	284	11.9	303	1	25	0.5	13
TU515	15" UNIROYAL TUB	8.5	216	1.38	35	13.58	345	12.18	309	12.9	329	1	25	0.5	13
TU516	16" UNIROYAL TUB	8.5	216	1.38	35	14.58	370	13.18	335	13.9	354	1	25	0.5	13
TU517	17" UNIROYAL TUB	8.5	216	1.38	35	15.58	396	14.18	360	14.9	379	1	25	0.5	13
TU518	18" UNIROYAL TUB	8.5	216	1.38	35	16.58	421	15.18	385	15.9	405	1	25	0.5	13
TU519	19" UNIROYAL TUB	8.5	216	1.38	35	17.58	446	16.18	411	16.9	430	1	25	0.5	13
TU413	13" UNIROYAL LONG	11.5	292	1.38	35	11.58	294	10.18	258	10.9	278	1	25	0.5	13
TU414	14" UNIROYAL LONG	11.5	292	1.38	35	12.58	319	11.18	284	11.9	303	1	25	0.5	13
TU415	15" UNIROYAL LONG	11.5	292	1.38	35	13.58	345	12.18	309	12.9	329	1	25	0.5	13



PB & TP STYLE Turn-Up Bladder

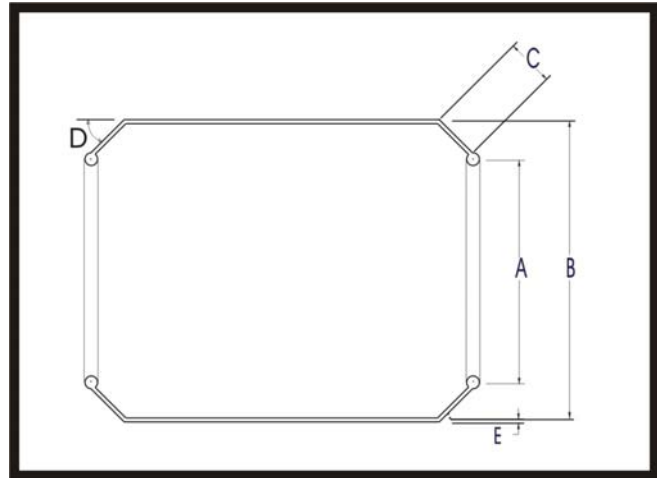
PART	PART CODE	OD "A"		NOSE ID "B"		BEAD ID "C"		REAR ID "D"		THICK "E"		NOSE LNG "F"		OVERALL LENGTH "G"	
		in.	mm.	in.	mm.	in.	mm.	in.	mm.	in.	mm.	in.	mm.	in.	mm.
10" PB TUB	TP510	9.38	238	8.72	221	8.00	203	8.33	212	0.33	8.4	1.25	31.8	9 to 9.25	229 to 235
11" PB TUB	TP511	9.90	251	9.25	235	8.50	216	8.90	226	0.33	8.4	1.25	31.8	9 to 9.25	229 to 235
12" PB TUB	TP512	10.75	273	10.25	260	9.50	241	9.90	251	0.25	6.4	1.25	31.8	### to 9.50	235 to 241
13" PB TUB	TP513	11.63	295	10.95	278	10.35	263	10.75	273	0.33	8.4	1.25	31.8	9 to 9.25	229 to 235
14" PB TUB	TP514	12.63	321	11.95	304	11.35	288	11.75	298	0.33	8.4	1.25	31.8	9 to 9.25	229 to 235
15" PB TUB	TP515	13.63	346	12.95	329	12.35	314	12.75	324	0.33	8.4	1.25	31.8	9 to 9.25	229 to 235
16" PB TUB	TP516	14.63	371	14.20	361	13.55	344	14.00	356	0.33	8.4	1.25	31.8	9 to 9.25	229 to 235
16 1/2" PB TUB	TP517	14.63	371	14.20	361	13.55	344	14.50	368	0.33	8.4	1.25	31.8	9 to 9.25	229 to 235
18" PB TUB	TP518	16.63	422	16.20	411	15.55	395	16.00	406	0.33	8.4	1.25	31.8	9 to 9.25	229 to 235
14 1/2" PB TUB	TP114E	13.13	334	11.95	304	11.35	288	11.75	298	0.50	12.7	1.25	31.8	11 to 11.3	279 to 287
13" PB LONG	TP413	11.63	295	10.95	278	10.35	263	10.75	273	0.33	8.4	1.25	31.8	11 to 11.3	279 to 286
14" PB LONG	TP414	12.63	321	11.95	304	11.35	288	11.75	298	0.33	8.4	1.25	31.8	11 to 11.3	279 to 286
15" PB LONG	TP415	13.63	346	12.95	329	12.35	314	12.75	324	0.33	8.4	1.25	31.8	11 to 11.3	279 to 286
16" PB LONG	TP416	14.63	371	14.20	361	13.55	344	14.00	356	0.33	8.4	1.25	31.8	11 to 11.3	279 to 286
15" PB SHORT	TPT1E	13.63	346	12.95	329	12.35	314	12.75	324	0.33	8.4	1.25	32	8.5	216
16" PB SHORT	TPT1F	14.63	372	14.70	373	13.55	344	14.00	356	0.33	8.4	1.25	32	8.5	216
13" PB TUB,w/2" Nose	TPH13	11.63	295	10.95	278	10.35	263	10.75	273	0.33	8.4	2.00	50.8	10 to 10	248 to 254
14" PB TUB,w/2" Nose	TPH14	12.63	321	11.95	304	11.35	288	11.75	298	0.33	8.4	2.00	50.8	10 to 10	248 to 254
15" PB TUB,w/2" Nose	TPH15	13.63	346	12.95	329	12.35	314	12.75	324	0.33	8.4	2.00	50.8	10 to 10	248 to 254
17" PB TUB,w/2" Nose	TPH17	15.63	397	15.20	386	14.55	370	15.00	381	0.33	8.4	2.00	50.8	10 to 10	248 to 254
18" PB TUB,w/2" Nose	TPH18	16.63	422	16.20	411	15.55	395	16.00	406	0.33	8.4	2.00	50.8	10 to 10	248 to 254



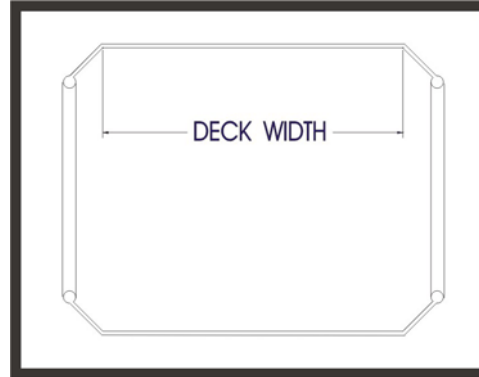
OBF STYLE Turn-Up Bladder

PART CODE	DESCRIPTION	OD "A"		ID (SHORT) "B"		ID (LONG) "C"		MOLDED WIDTH	
		in.	mm.	in.	mm.	in.	mm.	in.	mm.
YOBF2	12" OBF BLADDER	11.5	292	10.80	274	10.75	273	2.362	60
YOBF3	13" OBF BLADDER	12.5	318	11.80	300	11.75	298	2.362	60
YOBF4	14" OBF BLADDER	13.5	343	12.80	325	12.75	324	2.362	60
YOBF5	15" OBF BLADDER	14.5	368	13.80	351	13.75	349	2.362	60
YOBF6	16" OBF BLADDER	15.5	394	14.80	376	14.75	375	2.362	60
YOBF7	17" OBF BLADDER	16.75	425	16.00	406	15.95	405	2.362	60

**PB & TB STYLE
Turn-Up Bladder**



SIZE	PART CODE	BEAD DIA "A"		OD "B"		SHOULDER ANGLE			GAUGE "E"		PAGE #
		in.	mm	in.	mm	in.	mm	deg	in.	mm	
13" S SLEEVE	SH...	10.8	273	11.4	290	0.88	22	17.5	.145"-.155"	3.7-4.0	9
14" S SLEEVE	SJ...	10.8	273	12.2	310	1.38	35	30.5	.145"-.155"	3.7-4.0	10-11
15" S SLEEVE	SL...	10.8	273	13.2	335	1.88	48	38.5	.145"-.155"	3.7-4.0	12-13
16" S SLEEVE	SN...	10.8	273	14.3	363	2.25	57	48.6	.145"-.155"	3.7-4.0	14-15
16.5" S SLEEVE	SP...	10.8	273	14.5	368	2.38	60	49.8	.145"-.155"	3.7-4.0	15
16" TB SLEEVE	SE...	12.6	320	14.3	363	1.52	39	32.6	.145"-.155"	3.7-4.0	16
17" PB LONG SHLDR											17
17" PB STD. SHLDR											17
18" PB STD. SHLDR											18
TREAD SPLICER											19
UNIROYAL SLEEVES											20
PBI SLEEVES											21



P.B. Sleeves

13" S

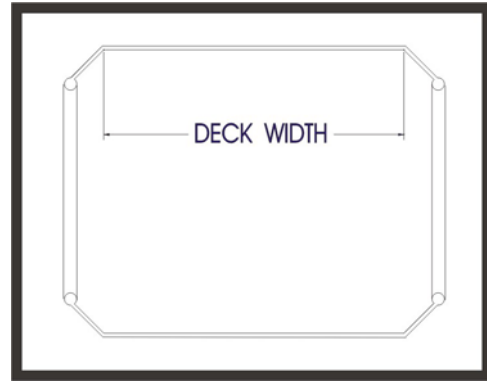
SIZE	PART CODE	DECK RANGE		DECK WIDTH	
		in.	mm.	in.	mm.
13- 8.7	SH08G	8.7 to 9.1	221 to 229	8.30	211
13-09	SH090	9.0 to 9.4	229 to 241	8.50	216
13- 9 1/2	SH092	9.5 to 10.4	241 to 267	9.00	229
13-10 1/2	SH102	10.5 to 11.4	267 to 292	10.00	254
13-11	SH110	11.0 to 12.1	279 to 305	10.50	267
13-12	SH120	12.0 to 13.25	305 to 337	11.50	292
13-12 1/2	SH122	12.5 to 13.75	318 to 349	12.00	305
13-13 3/4	SH133	13.75 to 15.0	349 to 381	13.25	337
13 14 1/4	SH141	14.25 to 15.5	362 to 394	13.75	349
13-15	SH150	15.0 to 16.25	381 to 413	14.50	368
13-15 1/2	SH152	15.5 to 16.75	394 to 425	15.00	381
13-16 1/4	SH161	16.25 to 17.5	413 to 444	15.75	400
13-16 3/4	SH163	16.75 to 18.0	425 to 457	16.25	413
13-17	SH170	17.0 to 18.5	432 to 470	16.50	419
13-17 1/2	SH172	17.5 to 19.0	444 to 483	17.00	432
13-18	SH180	18.0 to 19.5	457 to 495	17.50	445
13-18 1/2	SH182	18.5 to 20.0	470 to 508	18.00	457
13-20	SH200	20.0 to 21.5	508 to 546	19.50	495
13-20 1/2	SH202	20.5 to 22.25	521 to 565	20.00	508
13-21 1/2	SH212	21.5 to 23.0	546 to 584	21.00	533
13-22 1/4	SH221	22.25 to 24.0	565 to 610	21.75	552
13-22 3/4	SH223	22.75 to 25.0	578 to 635	22.25	565



P.B. Sleeves

14" S

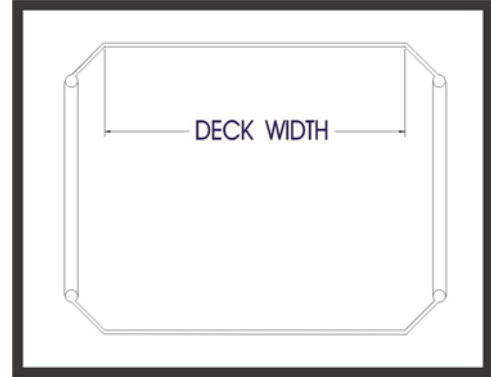
SIZE	PART CODE	DECK RANGE		DECK WIDTH	
		in.	mm.	in.	mm.
14-09	SJ090	9.0 to 10.0	229 to 224	8.50	216
14-09 1/2	SJ092	9.5 to 10.5	241 to 267	9.00	229
14-10	SJ100	10.0 to 11.0	254 to 279	9.50	241
14-10 1/2	SJ102	10.5 to 11.5	267 to 292	10.00	254
14-11	SJ110	11.0 to 12.0	279 to 305	10.50	267
14-11 1/2	SJ112	11.5 to 12.5	292 to 318	11.00	279
14-12	SJ120	12.0 to 13.0	305 to 330	11.50	292
14-12 1/2	SJ122	12.5 to 13.5	318 to 343	12.00	305
14-13	SJ130	13.0 to 14.0	330 to 356	12.50	318
14-13 1/2	SJ132	13.5 to 14.5	343 to 368	13.00	330
14-14	SJ140	14.0 to 15.0	356 to 381	13.50	343
14-14 1/4	SJ141	14.25 to 15.5	362 to 394	13.75	349
14-14 1/2	SJ142	14.5 to 15.75	368 to 400	14.00	356
14-14 3/4	SJ143	14.75 to 16.0	375 to 406	14.25	362
14-15 1/4	SJ151	15.25 to 16.5	387 to 419	14.75	375
14-15 3/4	SJ153	15.75 to 17.0	400 to 432	15.25	387
14-16 1/4	SJ161	16.25 to 17.75	413 to 451	15.75	400
14-16 3/4	SJ163	16.75 to 18.25	425 to 464	16.25	413
14-17 1/4	SJ171	17.25 to 18.75	438 to 476	16.75	425
14-17 1/2	SJ172	17.5 to 19.0	445 to 483	17.00	432
14-17 3/4	SJ173	17.75 to 19.25	451 to 489	17.25	438
14-18	SJ180	18.0 to 19.5	457 to 495	17.25	438
14-18 1/2	SJ182	18.5 to 20.0	470 to 508	18.00	457
14-19	SJ190	19.0 to 20.5	483 to 521	18.50	470
14-19 1/2	SJ192	19.5 to 21.0	495 to 533	19.00	483
14-20	SJ200	20.0 to 21.5	508 to 546	19.50	495
14-20 1/2	SJ202	20.5 to 22.0	521 to 559	20.00	508
14-21	SJ210	21.0 to 22.5	533 to 572	20.50	521
14-21 1/2	SJ212	21.5 to 23.0	546 to 584	21.00	533



P.B. Sleeves

14" S (cont.)

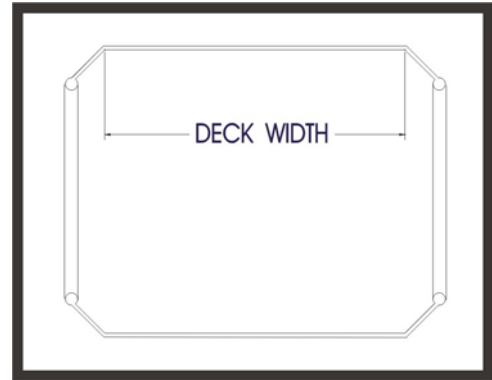
Size	Part Code	Deck Range, in.				Deck Width	
		in.	in.	mm.	mm.	in	mm
14-22	SJ220	22.00 to 23.50		559 to 597		21.50	546
14-22 1/2	SJ222	22.50 to 24.00		572 to 610		22.00	559
14-23	SJ230	23.00 to 24.50		584 to 622		22.50	572
14-23 1/2	SJ232	23.50 to 25.00		597 to 635		23.00	584
14-24	SJ240	24.00 to 25.50		610 to 648		23.50	597
14-24 1/2	SJ242	24.50 to 26.00		622 to 660		24.00	610
14-25	SJ250	25.00 to 26.50		635 to 673		24.50	622
14-26	SJ260	26.00 to 27.50		660 to 699		25.50	648
14-26 1/2	SJ262	26.50 to 28.00		673 to 711		26.00	660
14-27	SJ270	27.00 to 28.50		686 to 724		26.50	673
14-27 1/4	SJ271	27.25 to 28.75		692 to 730		26.75	679
14-27 1/2	SJ272	27.50 to 29.00		699 to 737		27.00	686
14-27 3/4	SJ273	27.75 to 29.25		705 to 743		27.25	692
14-28 1/4	SJ281	28.25 to 29.75		718 to 756		27.75	705
14-28 3/4	SJ283	28.75 to 30.25		730 to 768		28.25	718
14-29 1/4	SJ291	29.25 to 30.75		743 to 781		28.75	730
14-29 3/4	SJ293	29.75 to 31.25		756 to 794		29.25	743
14-30 1/4	SJ301	30.25 to 31.75		768 to 806		29.75	756
14-30 3/4	SJ303	30.75 to 32.25		781 to 819		30.25	768
14-31 1/4	SJ311	31.25 to 32.75		794 to 832		30.75	781
14-31 3/4	SJ313	31.75 to 33.25		806 to 845		31.25	794



P.B. Sleeves

15" S

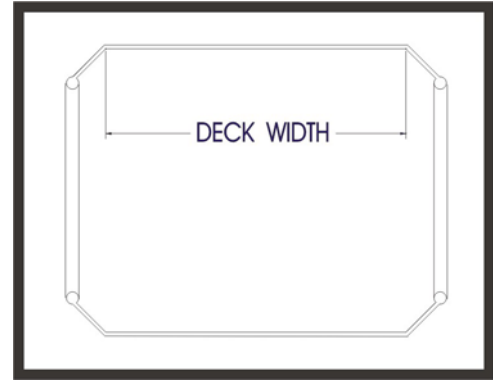
Size	Part Code	Deck Range, in.				Deck Width	
		in.	in.	mm.	mm.	in	mm
15-09	SL090	9.00	to 10.00	229	to 254	8.50	216
15- 9 1/4	SL091	9.25	to 10.25	235	to 260	8.75	222
15- 9 1/2	SL092	9.50	to 10.50	241	to 267	9.00	229
15-10	SL100	10.00	to 11.00	254	to 279	9.50	241
15-10 1/2	SL102	10.50	to 11.50	267	to 292	10.00	254
15-11	SL110	11.00	to 12.00	279	to 305	10.50	267
15-11 1/2	SL112	11.50	to 12.50	292	to 318	11.00	279
15-12	SL120	12.00	to 13.00	305	to 330	11.50	292
15-12 1/2	SL122	12.50	to 13.50	318	to 343	12.00	305
15-13	SL130	13.00	to 14.00	330	to 356	12.50	318
15-13 1/2	SL132	13.50	to 14.50	343	to 368	13.00	330
15-13 3/4	SL133	13.75	to 14.75	349	to 375	13.25	337
15-14 1/4	SL141	14.25	to 15.25	362	to 387	14.75	375
15-14 3/4	SL143	14.75	to 15.75	375	to 400	14.25	362
15-15	SL150	15.00	to 16.00	381	to 406	14.50	368
15-15 1/4	SL151	15.25	to 16.25	387	to 413	14.75	375
15-15 1/2	SL152	15.50	to 16.50	394	to 419	15.00	381
15-15 3/4	SL153	15.75	to 16.75	400	to 425	15.25	387
15-16	SL160	16.00	to 17.00	406	to 432	15.50	394
15-16 1/4	SL161	16.25	to 17.25	413	to 438	15.75	400
15-16 1/2	SL162	16.50	to 17.50	419	to 445	16.00	406
15-16 3/4	SL163	16.75	to 17.75	425	to 451	16.25	413
15-17 1/4	SL171	17.25	to 18.25	438	to 464	16.75	425
15-17 1/2	SL172	17.50	to 18.50	445	to 470	17.00	432
15-17 3/4	SL173	17.75	to 18.75	451	to 476	17.25	438
15-18	SL180	18.00	to 19.50	457	to 495	17.50	445
15-18 1/2	SL182	18.50	to 20.00	470	to 508	18.00	457
15-19	SL190	19.00	to 20.50	483	to 521	18.50	470
15-19 1/2	SL192	19.50	to 21.00	495	to 533	19.00	483



P.B. Sleeves

15" S (cont.)

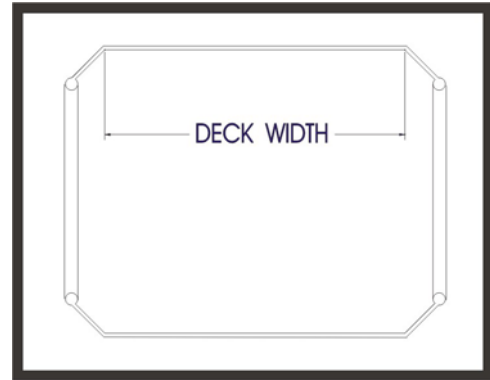
Size	Part Code	Deck Range, in.				Deck Width	
		in.	in.	mm.	mm.	in	mm
15-20	SL200	20.00	to 21.50	508	to 546	19.50	495
15-20 1/2	SL202	20.50	to 22.00	521	to 559	20.00	508
15-21	SL210	21.00	to 22.50	533	to 572	20.50	521
15-21 1/2	SL212	21.50	to 23.00	546	to 584	20.75	527
15-22	SL220	22.00	to 23.50	559	to 597	21.50	546
15-22 1/2	SL222	22.50	to 24.00	572	to 610	22.00	559
15-23	SL230	23.00	to 24.50	584	to 622	22.50	572
15-23 1/2	SL232	23.50	to 25.00	597	to 635	23.00	584
15-23 3/4	SL233	23.75	to 25.25	603	to 641	23.25	591
15-24 1/4	SL241	24.25	to 25.75	616	to 654	23.75	603
15-24 3/4	SL243	24.75	to 26.25	629	to 667	24.25	616
15-25 1/4	SL251	25.25	to 26.75	641	to 679	24.75	629
15-25 3/4	SL253	25.75	to 27.25	654	to 692	25.25	641
15-26 1/4	SL261	26.25	to 27.75	667	to 705	25.75	654
15-26 3/4	SL263	26.75	to 28.25	679	to 718	26.25	667
15-27 1/4	SL271	27.25	to 28.75	692	to 730	26.75	679
15-27 3/4	SL273	27.75	to 29.25	705	to 743	27.25	692
15-28 1/4	SL281	28.25	to 29.75	718	to 756	27.75	705
15-28 3/4	SL283	28.75	to 30.25	730	to 768	28.25	718
15-29 1/4	SL291	29.25	to 30.75	743	to 781	28.75	730
15-29 3/4	SL293	29.75	to 31.25	756	to 794	29.25	743
15-30 1/4	SL301	30.25	to 31.75	768	to 806	29.75	756
15-30 3/4	SL303	30.75	to 32.25	781	to 819	30.25	768
15-31 1/4	SL311	31.25	to 32.75	794	to 832	30.75	781
15-31 3/4	SL313	31.75	to 33.25	806	to 845	31.25	794
15-33 1/4	SL331	33.25	to 34.75	845	to 883	32.75	832
15-33 3/4	SL333	33.75	to 35.25	857	to 895	33.25	845
15-34 1/4	SL341	34.25	to 35.75	870	to 908	33.75	857
15-34 3/4	SL343	34.75	to 35.25	883	to 895	34.25	870



P.B. Sleeves

16" S

Size	Part Code	Deck Range, in.				Deck Width	
		in.	in.	mm.	mm.	in	mm
16-10 1/2	SN102	10.50	to 11.50	267	to 292	10.00	254
16-11	SN110	11.00	to 12.00	279	to 305	10.50	267
16-11 1/4	SN111	11.25	to 12.25	286	to 311	10.75	273
16-11 1/2	SN112	11.50	to 12.50	292	to 318	11.00	279
16-11 3/4	SN113	11.75	to 12.75	298	to 324	11.25	286
16-12	SN120	12.00	to 13.00	305	to 330	11.50	292
16-12 1/8	SN124	12.13	to 13.13	308	to 334	11.63	295
16-12 1/4	SN121	12.25	to 13.25	311	to 337	11.75	298
16-12 3/4	SN123	12.75	to 13.75	324	to 349	12.25	311
16-13 1/4	SN131	13.25	to 14.25	337	to 362	12.75	324
16-13 3/4	SN133	13.75	to 14.75	349	to 375	13.25	337
16-14 1/8	SN144	14.13	to 15.13	359	to 384	13.63	346
16-14 1/4	SN141	14.25	to 15.25	362	to 387	13.75	349
16-14 3/4	SN143	14.75	to 15.75	375	to 400	14.25	362
16-15 1/4	SN151	15.25	to 16.25	387	to 413	14.75	375
16-16	SN160	16.00	to 17.50	406	to 445	15.50	394
16-16 1/2	SN162	16.50	to 18.00	419	to 457	16.00	406
16-17	SN170	17.00	to 18.50	432	to 470	16.50	419
16-17 1/2	SN172	17.50	to 19.00	445	to 483	17.00	432
16-19	SN190	19.00	to 20.50	483	to 521	18.50	470
16-19 1/2	SN192	19.50	to 21.00	495	to 533	19.00	483
16-20	SN200	20.00	to 21.50	508	to 546	19.50	495
16-20 1/2	SN202	20.50	to 22.00	521	to 559	20.00	508
16-21	SN210	21.00	to 22.50	533	to 572	20.50	521
16-21 1/2	SN212	21.50	to 23.00	546	to 584	21.00	533
16-22	SN220	22.00	to 23.50	559	to 597	21.50	546
16-22 1/2	SN222	22.50	to 24.00	572	to 610	22.00	559
16-23	SN230	23.00	to 24.50	584	to 622	22.50	572



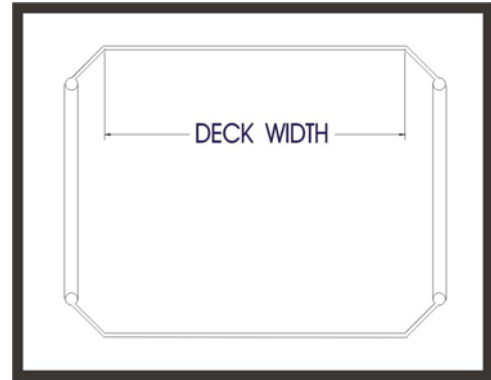
P.B. Sleeves

16" S (cont.)

Size	Part Code	Deck Range, in.				Deck Width	
		in.	in.	mm.	mm.	in	mm
16-23 1/2	SN232	23.50	to 25.00	597	to 635	23.00	584
16-23 3/4	SN234	23.75	to 25.25	603	to 641	23.25	591
16-24	SN240	24.00	to 25.50	610	to 648	23.50	597
16-24 3/4	SN243	24.75	to 26.25	629	to 667	24.25	616
16-26 1/4	SN261	26.25	to 27.75	667	to 705	25.75	654
16-26 3/4	SN263	26.75	to 28.25	679	to 718	26.25	667
16-27 1/4	SN271	27.25	to 28.75	692	to 730	26.75	679
16-27 3/4	SN273	27.75	to 29.25	705	to 743	27.25	692
16-28 1/4	SN281	28.25	to 29.75	718	to 756	27.75	705
16-28 3/4	SN283	28.75	to 30.25	730	to 768	28.25	718
16-29 1/4	SN291	29.25	to 30.75	743	to 781	28.75	730

16.5" S

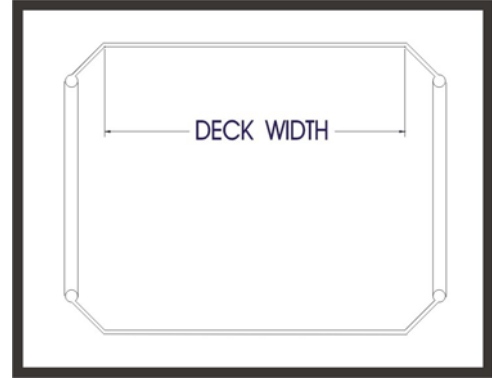
Size	Part Code	Deck Range, in.				Deck Width	
		in.	in.	mm.	mm.	in	mm
16 1/2-17	SP170	17.00	to 18.50	432	to 470	16.50	419
16 1/2-17 1/2	SP172	17.50	to 19.00	445	to 483	17.00	432
16 1/2-18 1/2	SP182	18.50	to 20.00	470	to 508	18.00	457
16 1/2-19	SP190	19.00	to 20.50	483	to 521	18.50	470
16 1/2-20	SP200	20.00	to 21.50	508	to 546	19.50	495
16 1/2-20 1/2	SP202	20.50	to 22.00	521	to 559	20.00	508
16 1/2-21 1/2	SP212	21.50	to 23.00	546	to 584	21.00	533
16 1/2-22	SP220	22.00	to 23.50	559	to 597	21.50	546
16 1/2-23	SP230	23.00	to 24.50	584	to 622	22.50	572
16 1/2-23 1/2	SP232	23.50	to 25.00	597	to 635	23.00	584
16 1/2-26	SP260	26.00	to 27.50	660	to 699	25.50	648
16 1/2-26 1/2	SP262	26.50	to 28.00	673	to 711	26.00	660
16 1/2-27 3/4	SP273	27.75	to 29.25	705	to 743	27.25	692
16 1/2-28 1/4	SP281	28.25	to 29.75	718	to 756	27.75	705



TB SLEEVES

16" TB SLEEVE

Size	Part Code	Deck Range, in.				Deck Width	
		in.	in.	mm.	mm.	in	mm
16-16	SE 160	16.00 to 17.50		406 to 445		15.50	394
16-16.5	SE162	16.50 to 18.00		419 to 457		16.00	406
16-17	SE 170	17.00 to 18.50		432 to 470		16.50	419
16-18	SE 180	18.00 to 19.50		457 to 495		17.50	445
16-19.5	SE 192	19.50 to 21.00		495 to 533		19.00	483
16-20.5	SE 202	20.50 to 22.00		521 to 559		20.00	508
16-21	SE 210	21.00 to 22.50		533 to 572		20.50	521
16-22	SE 220	22.00 to 23.50		559 to 597		21.50	546
16-24.5	SE 241	24.25 to 25.75		616 to 654		23.75	603
16-26.25	SE 261	26.25 to 27.75		667 to 705		25.75	654
16-26.5	SE 262	26.50 to 28.00		673 to 711		26.00	660



P.B. Sleeves

17" S* (Long Shoulder)

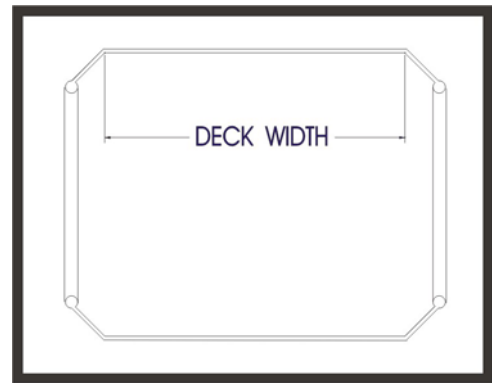
PART NUMBER	SIZE	DECK RANGE					DECK WIDTH		
		inches		inches	mm		mm	inches	mm
S7112	17-11 1/2	11.50	to	13.00	292.1	to	330.2	11.00	279.4
S7122	17-12 1/2	12.50	to	14.00	317.5	to	355.6	12.00	304.8
S7131	17-13 1/4	13.25	to	14.75	336.6	to	374.7	12.75	323.9
S7133	17-13 3/4	13.75	to	15.25	349.3	to	387.4	13.25	336.6
S7142	17-14 1/2	14.60	to	16.10	370.8	to	408.9	14.10	358.1
S7160	17-16	16.00	to	17.50	406.4	to	444.5	15.50	393.7
S7190	17-19	19.00	to	20.50	482.6	to	520.7	18.50	469.9
S7192	17-19 1/2	19.50	to	21.00	495.3	to	533.4	19.00	482.6
S7202	17-20 1/2	20.50	to	22.00	520.7	to	558.8	20.00	508.0
S7211	17-21 1/2	21.25	to	22.75	539.8	to	577.9	20.75	527.1
S7220	17-22	22.00	to	23.50	558.8	to	596.9	21.50	546.1

* Note: This series of 17" sleeves has the deck diameter of a 17" sleeve and the clamping diameter of a 16" sleeve.

17" S* (Standard Shoulder)

PART NUMBER	SIZE	DECK RANGE					DECK WIDTH		
		inches		inches	mm		mm	inches	mm
ST112	17-11 1/2	11.50	to	13.00	292.1	to	330.2	11.00	279.4
ST122	17-12 1/2	12.50	to	14.00	317.5	to	355.6	12.00	304.8
ST131	17-13 1/4	13.25	to	14.75	336.6	to	374.7	12.75	323.9
ST132	17-13 1/2	13.50	to	14.00	342.9	to	355.6	13.00	330.2
ST133	17-13 3/4	13.75	to	15.25	349.3	to	387.4	13.25	336.6
ST142	17-14 1/2	14.60	to	16.10	370.8	to	408.9	14.10	358.1
ST160	17-16	16.00	to	17.50	406.4	to	444.5	15.50	393.7
ST180	17-18	18.00	to	19.50	457.2	to	495.3	17.50	444.5
ST182	17-18 1/2	18.50	to	20.00	469.9	to	508.0	18.00	457.2
ST190	17-19	19.00	to	20.50	482.6	to	520.7	18.50	469.9
ST192	17-19 1/2	19.50	to	21.00	495.3	to	533.4	19.00	482.6
ST202	17-20 1/2	20.50	to	22.00	520.7	to	558.8	20.00	508.0
ST212	17-21 1/2	21.25	to	22.75	539.8	to	577.9	20.75	527.1
ST220	17-22	22.00	to	23.50	558.8	to	596.9	21.50	546.1

Other sizes available upon request.

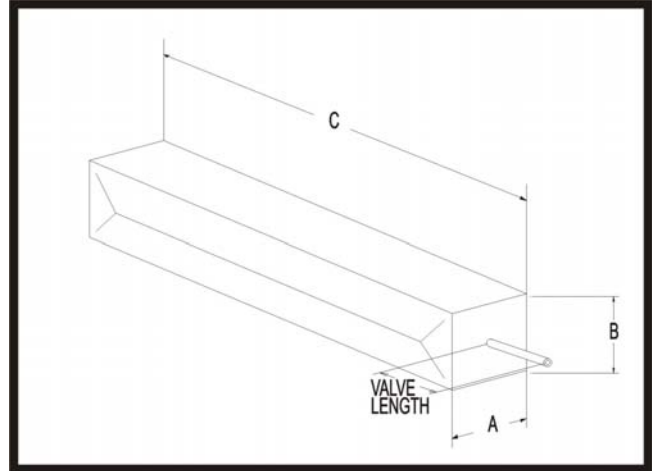


P.B. Sleeves

18" S* (Standard Shoulder)

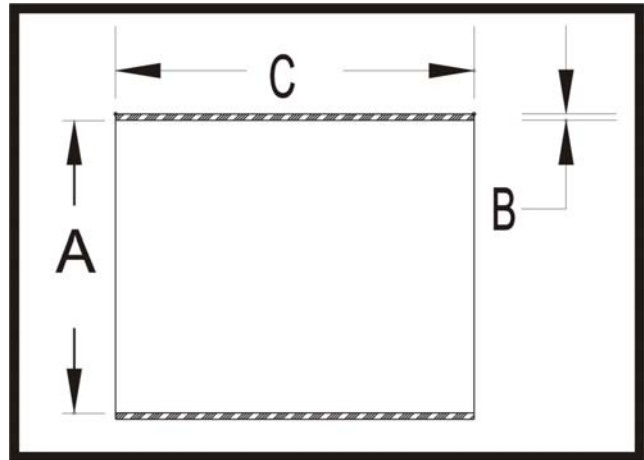
PART NUMBER	SIZE	DECK RANGE				DECK WIDTH	
		inches	inches	mm	mm	inches	mm
S8300	18-13	13.00	to 14.50	330.20	to 368.30	12.50	317.5
S8312	18-13.5	13.50	to 15.00	342.90	to 381.00	13.00	330.2
S8425	18-14 1/4	14.25	to 15.75	361.95	to 400.05	13.75	349.3
S8500	18-15	15.00	to 14.00	342.90	to 355.60	14.50	368.3
S8600	18-16	16.00	to 17.50	406.40	to 444.50	15.50	393.7
S8725	18-17 1/4	17.25	to 18.75	438.15	to 476.25	16.75	425.5

Call to inquire about other sizes.



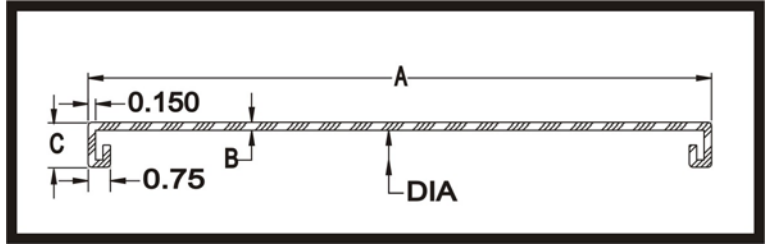
TREAD SPLICER

PART CODE	DESCRIPTION	WIDTH "A"		HEIGHT "B"		LENGTH "C"	
		in.	mm.	in.	mm.	in.	mm.
Z1116	16" TREAD SPLICER BAG	2.44	62	2.56	65	16.50	419
Z1120	20" TREAD SPLICER BAG	2.44	62	2.56	65	20.00	508
Z1124*	24" TREAD SPLICER BAG	2.44	62	2.56	65	24.00	610
Z1126	26" TREAD SPLICER BAG	2.44	62	2.56	65	25.50	648
Z1128	28" TREAD SPLICER BAG	2.44	62	2.56	65	27.50	699
Z1130	30" TREAD SPLICER BAG	2.44	62	2.56	65	29.50	749
Z2229	29" TREAD SPLICER BAG	4.00	102	3.50	89	29.50	749
STD. VALVE LENGTH						1.50	38
* "K" VALVE LENGTH USED ONLY WHEN SPECIFIED						5.38	137



Uniroyal Sleeves

PART CODE	DESCRIPTION	ID "A"		GAUGE "B"		WIDTH "C"	
		in.	mm.	in.	mm.	in.	mm.
SQ113	13" UNIROYAL SLEEVE	11.75	298	0.145 to 0.155	3.7 to 3.9	7.0	178
SS125	14" UNIROYAL SLEEVE	12.25	311	0.145 to 0.155	3.7 to 3.9	7.5	191
SS12A	14" UNIROYAL SLEEVE	12.25	311	0.145 to 0.155	3.7 to 3.9	7.0	178
SSPE7	14" PRECISION SLEEVE	12.25	311	0.145 to 0.155	3.7 to 3.9	7.0	178
SU123	15" UNIROYAL SLEEVE	12.75	324	0.145 to 0.155	3.7 to 3.9	7.0	178
SU130	15" UNIROYAL SLEEVE	13.00	330	0.145 to 0.155	3.7 to 3.9	5.0	127
SU133	15" UNIROYAL SLEEVE	13.75	349	0.145 to 0.155	3.7 to 3.9	7.0	178
SUPD5	15" PRECISION SLEEVE	13.75	349	0.145 to 0.155	3.7 to 3.9	7.0	178
SW133	16" UNIROYAL SLEEVE	13.75	349	0.145 to 0.155	3.7 to 3.9	7.0	178
SW140	16" UNIROYAL SLEEVE	14.00	356	0.145 to 0.155	3.7 to 3.9	5.0	127
SW143	16" UNIROYAL SLEEVE	14.75	375	0.145 to 0.155	3.7 to 3.9	7.0	178
SW145	16" UNIROYAL SLEEVE	14.38	365	0.145 to 0.155	3.7 to 3.9	6.5	165
SW146	16" UNIROYAL SLEEVE	14.75	375	0.145 to 0.155	3.7 to 3.9	6.0	152
SWQ20	17" UNIROYAL SLEEVE	16.38	416	0.145 to 0.155	3.7 to 3.9	20.0	508
SWQ60	17" UNIROYAL SLEEVE	16.38	416	0.145 to 0.155	3.7 to 3.9	6.0	152
SWQ80	17" UNIROYAL SLEEVE	16.38	416	0.145 to 0.155	3.7 to 3.9	8.0	203



PBI SLEEVES

SIZE	PART CODE	DECK WIDTH "A"		GAUGE "B"		SHOULDER "C"		DIAMETER "DIA"	
		in.	mm	in.	mm	in.	mm	in.	mm
9" PBI SLEEVE	SV...			0.15	4	1.00	25	7.95	202
9 - 21.4	SV214	21.4	544	"	"	"	"	"	"
9 - 21.7	SV217	21.7	551	"	"	"	"	"	"
9 - 26.7	SV267	26.7	678	"	"	"	"	"	"
10" PBI SLEEVE	SR...			0.25	6	0.75	19	8.75	222
10 - 13.0	SR130	13.0	330	"	"	"	"	"	"
11" PBI SLEEVE	SX...			0.25	6	0.75	19	9.65	245
11 - 13.9	SX139	13.9	353	"	"	"	"	"	"
11 - 14.2	SX142	14.2	361	"	"	"	"	"	"
11 - 14.4	SX144	14.4	366	"	"	"	"	"	"
11 - 17.2	SX172	17.2	437	"	"	"	"	"	"
11 - 18.8	SX188	18.8	478	"	"	"	"	"	"
11 - 19.7	SX197	19.7	500	"	"	"	"	"	"
11 - 20.0	SX200	20.0	508	"	"	"	"	"	"
12" PBI SLEEVE	SXA..			0.25	6	0.75	19	10.65	271
12 - 11.5	SXA15	11.5	292	"	"	"	"	"	"
12 - 12.5	SXA25	12.5	318	"	"	"	"	"	"

Split Air Brake



THE TWO-PIECE POLYMER AIR BRAKE

It is no longer necessary to pull the entire shaft out of equipment to change a circular air brake. The two-piece design of the Polymer brake allow you to save hours of downtime required to repair a faulty brake. In many cases brakes that formerly required eight hours to change are now being changed in an hour and a half. You may be able to realize even more savings, depending on your particular application.

The halves are interchangeable and in the event that one half develops a leak, you need only replace that half.

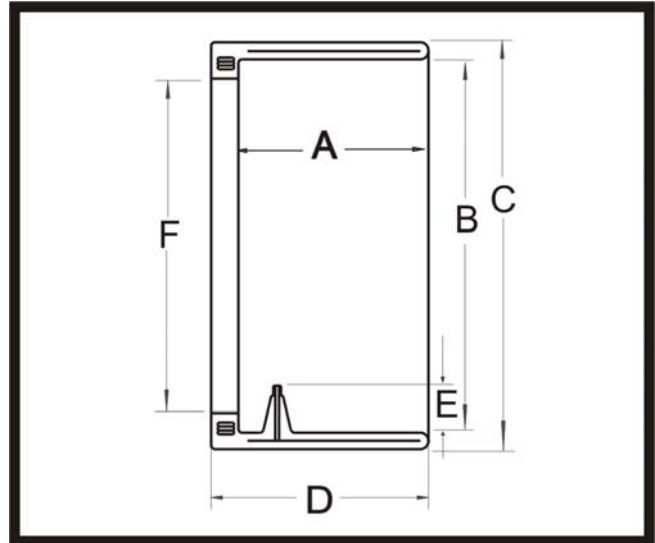
The only modification required to install these units is a “T” at the end of the existing air line to enable you to supply air to both halves.

Presently the units are available in the following sizes:

PIPCO Part No.	SIZE (in.)	MOUNTING BOLT CIRCLE (in.)	INSIDE DIAMETER
PA080	8	12.125	8.125
PA100	10	14.625	10.125

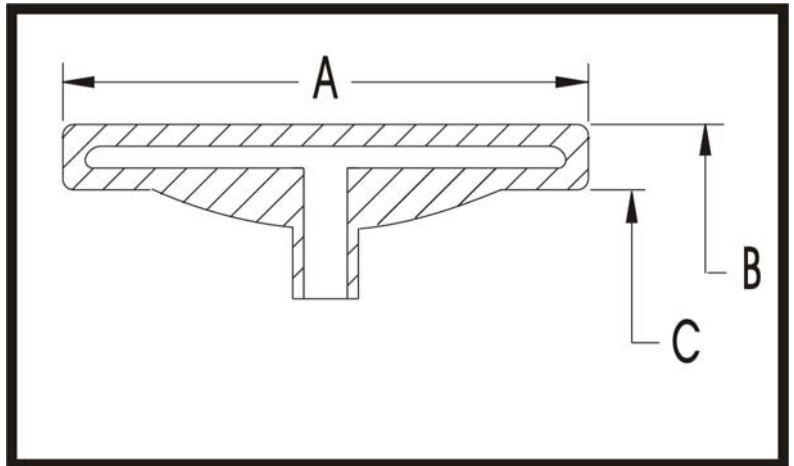
Please inquire about additional sizes

Coil Lifter Bag



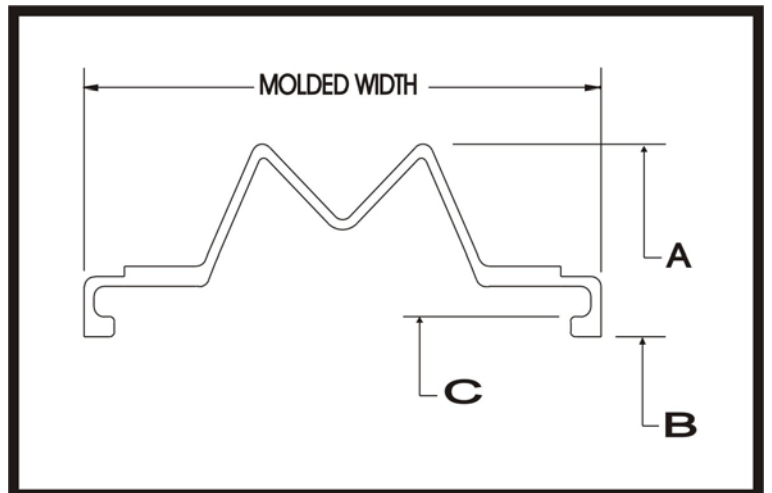
Part #	Capacity(lbs)	A in.	Dia. B in.	Dia. C in.	D in.	E in.	Dia. F in.
YB 201	1000	10.13	12.00	13.25	11.00	1.50	10.75
YB 202	2000	15.13	12.00	13.25	16.00	1.50	10.75
YB 203	2000	12.81	22.56	24.06	14.00	1.50	21.06

GT BEAD Expander Bladder



Part Code	Description	Width "A"		OD "B"		ID "C"	
		in.	mm.	in.	mm.	in.	mm.
YL 002	GT Bead Expander	2.25	57.2	10.25	260.4	9.45	240.0

GT BEAD Sleeve



Part Code	Description	Width		OD "A"		BEAD ID "B"		BEAD OD "C"	
		in.	mm.	in.	mm.	in.	mm.	in.	mm.
YL 001	13" GT Bead Sleeve (8200)	5.375	136.5	12.053	306.1	10.00	254.0	10.50	266.7
YL 004	14" GT Bead Sleeve (8201)	5.375	136.5	12.916	328.1	10.00	254.0	10.50	266.7
YL 005	15" GT Bead Sleeve (8202)	5.375	136.5	13.906	353.2	10.00	254.0	10.50	266.7



POLYMER INDUSTRIAL PRODUCTS CO., LLC.
PO BOX 310
688 INDUSTRIAL PARK ROAD
PINEY FLATS, TN 37686 U.S.A.
TEL: 423.538.5105 FAX: 423.538.3262
Email: sales@pipcousa.com